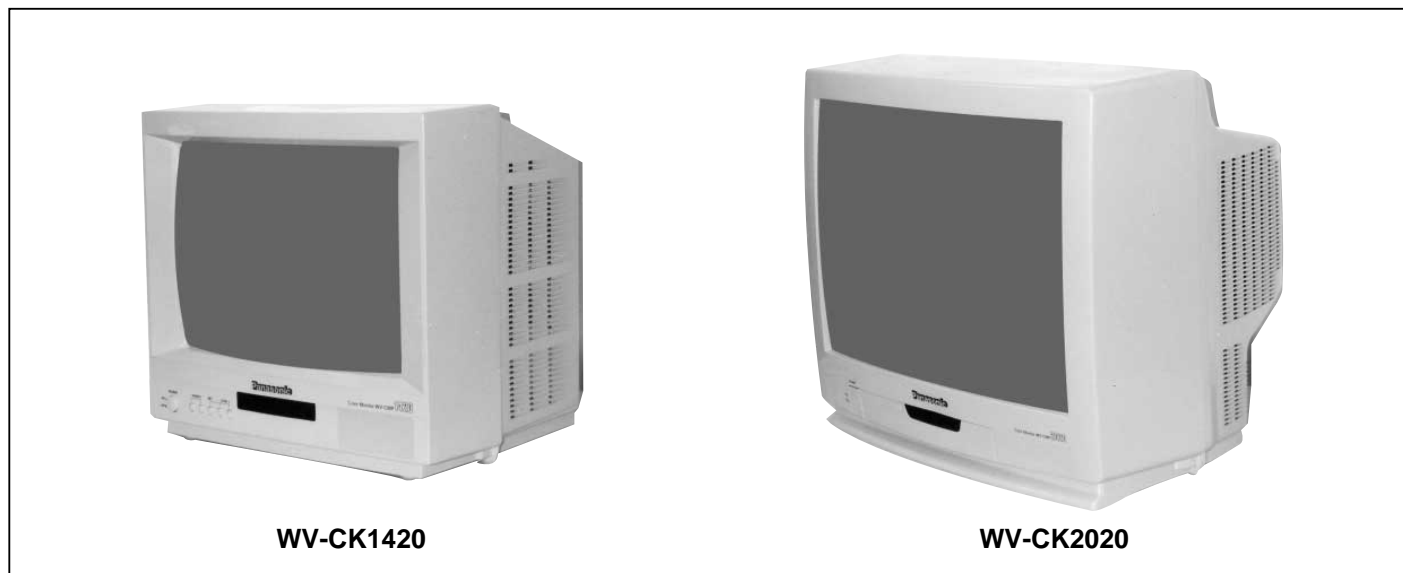


Service Manual

Colour Monitor

WV-CK1420/WV-CK2020



WV-CK1420

WV-CK2020

SPECIFICATIONS

WV-CK1420

Power Source :	220 - 240V AC, 50Hz
Power Consumption :	Approx. 66W
Screen Size :	371.8mm diagonal tube screen size, 90° deflection 335.4mm diagonal actual visual size
Horizontal Resolution :	330TV lines at centre
Video Input :	1.0V[p-p] composite/75Ω, BNC with Auto Termination
Audio Input :	-8dB/Hi-z, RCA standard jack
Speaker Output :	0.7W
Sweep Linearity :	Horizontal: Less than 5% Vertical: Less than 5%
Sweep Geometry :	Less than 2%
Ambient Operating Humidity :	Less than 90%
Ambient Operating Temperature :	-10°C - +50°C (14°F - 122°F)
Dimensions :	366(W) x 346(H) x 365(D)mm [14-7/16"(W) x 13-10/16"(H) x 14-6/16"(D)]
Weight :	9.6kg (21.2lbs.)

WV-CK2020

Power Source :	220 - 240V AC, 50Hz
Power Consumption :	Approx. 80W
Screen Size :	548mm diagonal tube screen size, 90° deflection 508mm diagonal actual visual size
Horizontal Resolution :	500TV lines at centre
Video Input :	1.0V[p-p] composite/75Ω, BNC with Auto Termination

Panasonic

© 1999 Matsushita Communication Industrial Co., Ltd.
All rights reserved. Unauthorized copying and
distribution is a violation of law.

⚠ WARNING

This service information is designed for experienced repair technicians only and is not designed for use by the general public.

It does not contain warnings or cautions to advise non-technical individuals of potential dangers in attempting to service a product.

Products powered by electricity should be serviced or repaired only by experienced professional technicians. Any attempt to service or repair the product or products dealt with in this service information by anyone else could result in serious injury or death.

<div style="border: 2px solid black; padding: 5px;"><div style="display: flex; justify-content: space-between; align-items: center;"><div style="text-align: center;">CAUTION <small>RISK OF ELECTRIC SHOCK DO NOT OPEN</small></div></div><p style="font-size: 0.8em; margin-top: 5px;">CAUTION: TO REDUCE THE RISK OF ELECTRIC SHOCK, DO NOT REMOVE COVER (OR BACK). NO USER SERVICEABLE PARTS INSIDE. REFER SERVICING TO QUALIFIED SERVICE PERSONNEL.</p></div>	<div style="display: flex; flex-direction: column; gap: 10px;"><div style="display: flex; align-items: center;"><div style="font-size: 0.8em; padding-left: 10px;">This symbol warns the user that uninsulated voltage within the unit may have sufficient magnitude to cause electric shock. Therefore, it is dangerous to make any kind of contact with any inside part of this unit.</div></div><div style="display: flex; align-items: center;"><div style="font-size: 0.8em; padding-left: 10px;">This symbol alerts the user that important literature concerning the operation and maintenance of this has been included. Therefore, it should be read carefully in order to avoid any problems.</div></div></div>
---	---

IMPORTANT SAFETY NOTICE

There are special components used in this equipment which are important for safety. These parts are indicated by the "⚠" mark on the schematic diagram and the replacement parts list. It is essential that these critical parts should be replaced with manufacturer's specified parts to prevent X-radiation, shock, fire, or other hazards. Do not modify the original design without permission of manufacture.

Audio Input :	-8dB/Hi-z, RCA standard jack
Speaker Output :	0.7W
Sweep Linearity :	Horizontal: Less than 5% Vertical: Less than 5%
Sweep Geometry :	Less than 2%
Ambient Operating Humidity :	Less than 90%
Ambient Operating Temperature :	-10°C - +50°C (14°F - 122°F)
Dimensions :	509(W) x 467(H) x 480(D)mm [20-1/16"(W) x 18-6/16"(H) x 18-14/16"(D)]
Weight :	21kg (46.3lbs.)

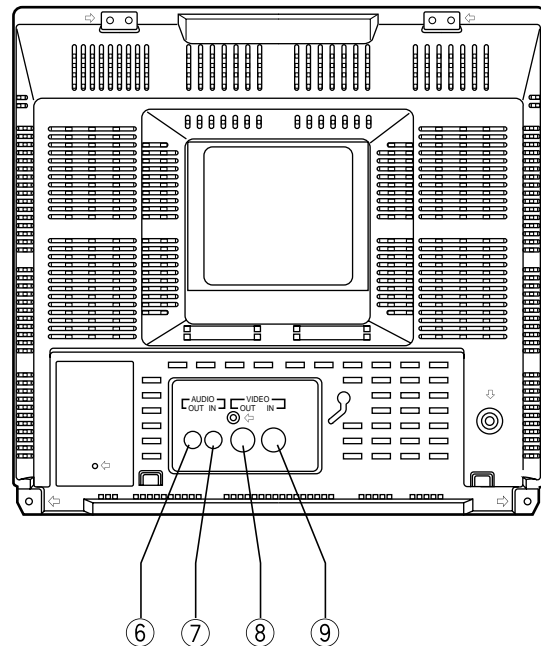
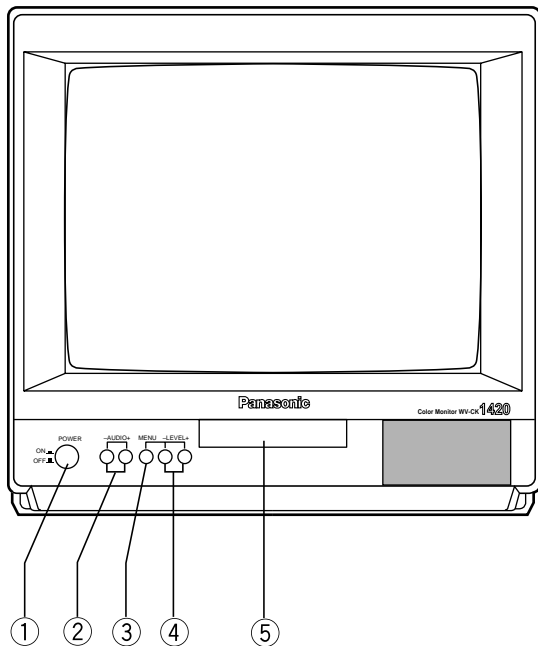
Weights and dimensions shown are approximate.
Specifications are subject to change without notice.

CONTENTS

Major Operating Controls and Their Functions	1
Adjustment Procedure	3
Location of Test Points and Adjusting Controls	9
Block Diagram	10
Schematic Diagram	11
Conductor View	12
Exploded View	
WV-CK1420	13
WV-CK2020	14
Replacement Parts List	15

MAJOR OPERATING CONTROLS AND THEIR FUNCTIONS

■ WV-CK1420



1. Power Switch (POWER, ON/OFF)

This is a push-push type switch which turns the power of this monitor on and off.

Press once and the switch remains down (—) for turning on the power of monitor.

Press again, the switch comes up (■) for turning off the power of the monitor.

2. Audio Control Buttons (-AUDIO+)

Press these buttons to increase or decrease the sound volume level.

3. Menu Button (MENU)

Press to display the setup display or move the cursor down one line in the setup display.

4. Level Control Button (-LEVEL+)

Press these buttons to adjust level of the selected item in the setup display, or select a parameter in the setup display.

5. Power Indicator

This indicator lights up (red) when the Monitor's power is turned on.

6. Audio Output Connector (AUDIO OUT)

The audio input signal connected to the audio input connector ⑦ is looped through to this connector.

7. Audio Input Connector (AUDIO IN)

For input of audio signal from an outboard device.

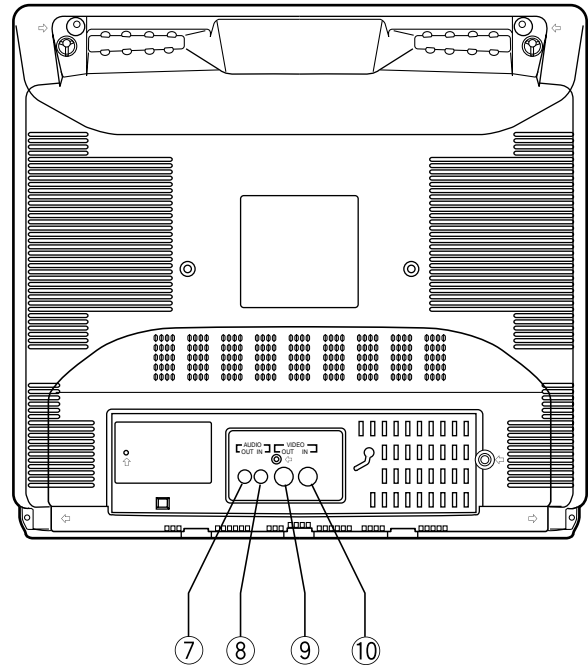
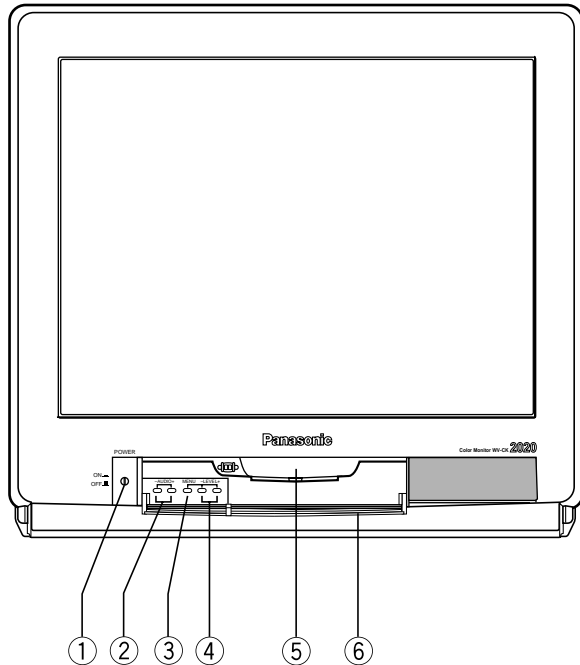
8. Video Output Connector (VIDEO OUT)

The video input signal connected to the video input connector ⑨ is looped through to this connector and terminated automatically.

9. Video Input Connector (VIDEO IN)

For input of the PAL composite video signal from an outboard device.

■ WV-CK2020



1. Power Switch (POWER, ON/OFF)

This is a push-push type switch which turns the power of this monitor on and off.

Press once and the switch remains down (■) for turning on the power of monitor.

Press again, the switch comes up (□) for turning off the power of the monitor.

2. Audio Control Buttons (-AUDIO+)

Press these buttons to increase or decrease the sound volume level.

3. Menu Button (MENU)

Press to display the setup display or move the cursor down one line in the setup display.

4. Level Control Button (-LEVEL+)

Press these buttons to adjust level of the selected item in the setup display, or select a parameter in the setup display.

5. Power Indicator

This indicator lights up (red) when the Monitor's power is turned on.

6. Control Panel Cover

Press to open for access to the control buttons on the Control Panel.

7. Audio Output Connector (AUDIO OUT)

The audio input signal connected to the audio input connector ⑧ is looped through to this connector.

8. Audio Input Connector (AUDIO IN)

For input of audio signal from an outboard device.

9. Video Output Connector (VIDEO OUT)

The video input signal connected to the video input connector ⑩ is looped through to this connector and terminated automatically.

10. Video Input Connector (VIDEO IN)

For input of the PAL composite video signal from an outboard device.

ADJUSTMENT PROCEDURE

1. Test Equipment Required

- The following equipments are required for adjustment of WV-CK1420 and WV-CK2020 Colour Video Monitors.
- Oscilloscope
- Digital Voltmeter
- TV Signal Generator
- Degaussing Coil
- Tamper Proof Screwdriver

2. Disassembling Procedure for the Adjustment

■ WV-CK1420

- Referring to Fig. 2-1, remove one screw that secure the Cord Holder and remove the Cord Holder.

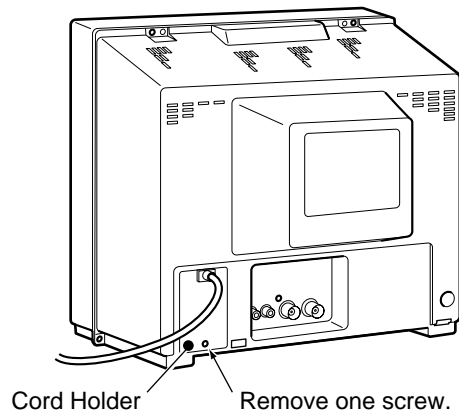


Fig. 2-1

- Referring to Fig. 2-2, remove six screws that secure the Rear Cover and remove the Rear Cover.

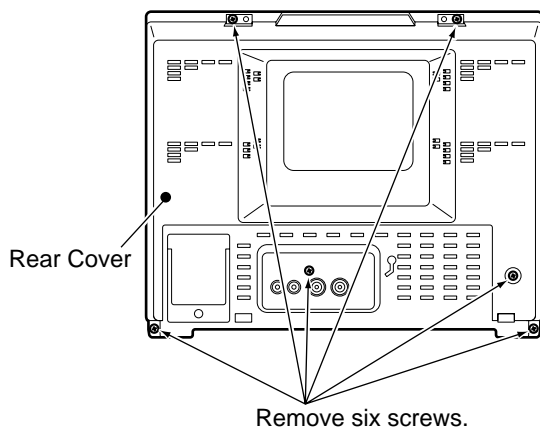


Fig. 2-2

■ WV-CK2020

- Referring to Fig. 2-3, remove one screw that secure the Cord Holder and remove the Cord Holder.

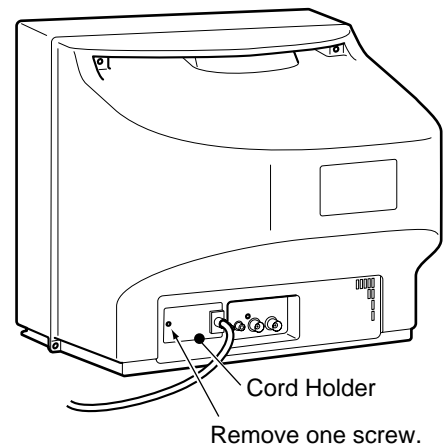


Fig. 2-3

- Referring to Fig. 2-4, remove six screws that secure the Rear Cover and remove the Rear Cover.

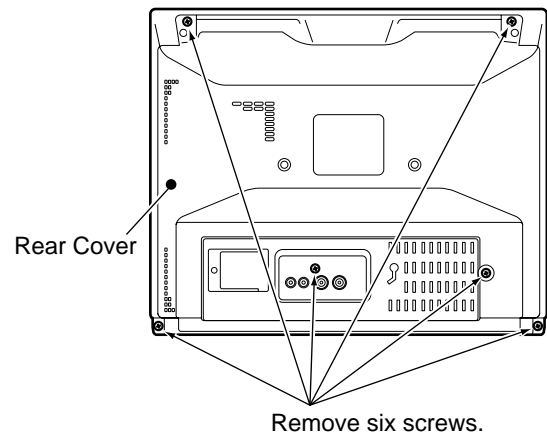


Fig. 2-4

3. Adjustment Flowchart

The Fig. 3-1 shows the Adjustment Flowchart.

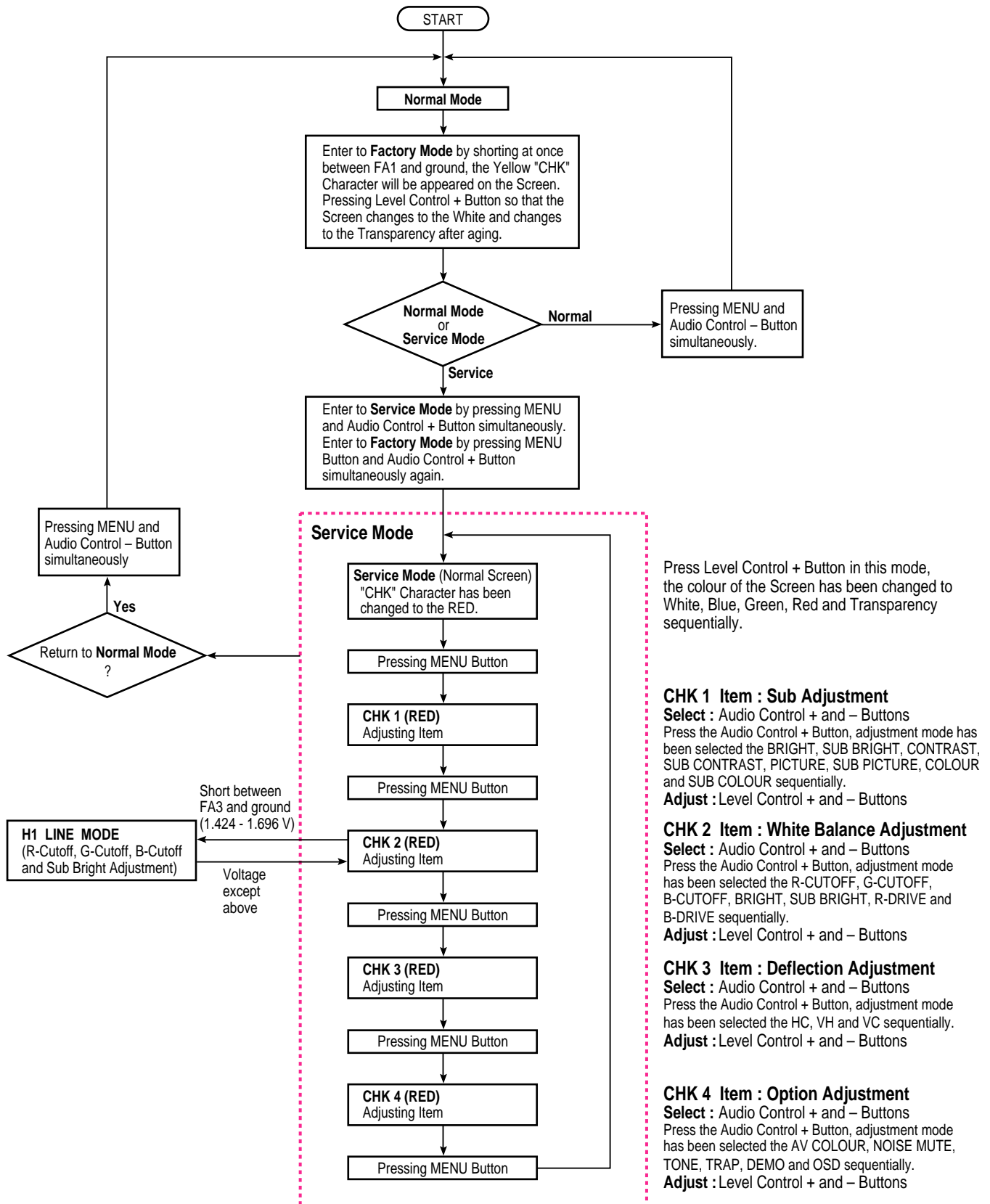


Fig. 3-1

- Short between FA1 and ground at once to set the **FACTORY Mode**, the Yellow "CHK" Character will be displayed on the Screen, and press the **LEVEL CONTROL (+)** Button the Screen changes to the White. The Screen changes to the Transparency after aging.
- Return to the Normal Mode from the **FACTORY Mode** by pressing the **MENU** Button and **AUDIO CONTROL (-)** Button simultaneously.
- Enter to the **SERVICE Mode** from the **FACTORY Mode** by pressing the **MENU** Button and **AUDIO CONTROL (+)** Button simultaneously, the "CHK" Character has been changed to the Red.
- Return to the **FACTORY Mode** from the **SERVICE Mode** by pressing the **MENU** Button and **AUDIO CONTROL (+)** Button simultaneously.
- Return to the Normal Mode from the **SERVICE Mode** by pressing the **MENU** Button and **AUDIO CONTROL (-)** Button simultaneously.
- In the **SERVICE Mode** (Normal Screen), the colour of the Screen has been changed to White, Blue, Green, Red and Transparency sequentially every pressing the **LEVEL CONTROL (+)** Button.
- In the **SERVICE Mode** (Normal Screen), to enter the **CHK1 Mode** by pressing the **MENU** Button and the Adjustment Items will be displayed on the Screen.
- The Bright, Sub Bright, Contrast, Sub Contrast, Picture, Sub Picture, Colour and Sub Colour Adjustments will be done in this mode.
- To enter the **CHK2 Mode** by pressing the **MENU** Button and the Adjustment Items will be displayed on the Screen.
- To enter the **H1 LINE Mode** by shorting the FA3 and ground.
- The R-Cutoff, G-Cutoff, B-Cutoff, Bright, Sub Bright, R-Drive and B-Drive Adjustments will be done in this mode.
- To enter the **CHK3 Mode** by pressing the **MENU** Button and the Adjustment Items will be displayed on the Screen.
- The HC, VH and VC Adjustments will be done in this mode.
- To enter the **CHK4 Mode** by pressing the **MENU** Button and the Adjustment Items will be displayed on the Screen.
- The AV Colour, Noise Mute, Tone, Trap, Demo, OSD Adjustments will be done in this mode.
- Return to the first menu of the **SERVICE Mode** by pressing the **MENU** Button.

4. Connection And Setting Up

4.1. Connection

- The Fig. 4-1 shows the connection diagram for the adjustment procedure.

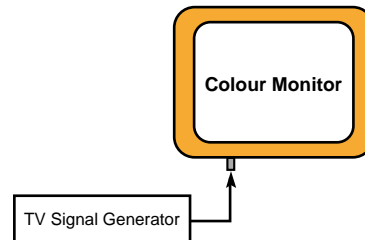


Fig. 4-1

- Connect the coaxial cable between Video Input Connector of the Colour Monitor and Video Output Connector of TV Signal Generator.

4.2. Setting Up

- Turn ON the Power Switch.
- Press the **MENU** Button, the setup Menu will be displayed as shown in Fig. 4-2.

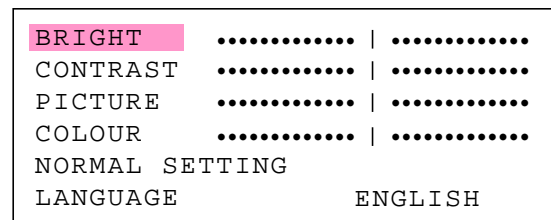


Fig. 4-2

- Select the desired **LANGUAGE** by pressing the **LEVEL CONTROL (-)** or **(+)** Buttons, pressing the Buttons will toggle the Setup display in selected as shown in fig. 4-3.



Fig. 4-3

- Move the cursor to the **BRIGHT**, **CONTRAST**, **PICTURE**, **COLOUR** by pressing the **MENU** Button and set all values to 32 (Center position) as an initial setting.

5. Adjustment Procedure

- Refer to the Location of the Test Points and Adjusting Controls on page 9.

(1). Sub Contrast Adjustment

Test Point : Pin 3 of A11 (G) **Main Board**
Adjust : LEVEL CONTROL (+) **Main Board**
 LEVEL CONTROL (-) **Main Board**

- Turn OFF the Power Switch.
- Supply the Colour Bar signal to the Video Input Connector.
- Short between Anode of D504 and ground by jumper wire to stop the ABL.
- Turn ON the Power Switch.
- Set the Service Mode and select the "CHK 1" mode.
- Select the **BRIGHT** Item.
- Set the **BRIGHT** Item to the minimum position (0).
- Select the **CONTRAST** Item.
- Set the **CONTRAST** Item to the maximum position (63).
- Connect the Oscilloscope to the pin 3 of Connector A11 on the Main Board.
- Adjust **SUB BRIGHT** so that the signal between Black and White at the pin 3 of A11 does not saturate.
- Adjust **SUB CONTRAST** so that the signal between Black and White at the pin 3 of A11 becomes 3.1 ± 0.1 V.
- Remove jumper wire from Anode of D504 and ground.

(2). Colour Output Adjustment

Test Point : Q353-C (B) for WV-CK1420 **CRT Socket Board**
 Q354-C (B) for WV-CK2020 **CRT Socket Board**
Adjust : LEVEL CONTROL (+) **Main Board**
 LEVEL CONTROL (-) **Main Board**

- Supply the Colour Bar signal to the Video Input Connector.
- Set the Service Mode and select the "CHK 1" mode.
- Select the **BRIGHT** Item.
- Set the **BRIGHT** Item to the minimum position (0).
- Select the **CONTRAST** Item.
- Set the **CONTRAST** Item to the center position (32).
- Select the **PICTURE** Item.
- Set the **PICTURE** Item to the minimum position (0).
- Select the **COLOUR** Item.
- Set the **COLOUR** Item to the enter position (32).
- Connect the Oscilloscope to the Collector of Q353 for WV-CK1420 or Collector of Q354 for WV-CK2020 on the CRT Socket Board.

- Adjust **SUB COLOUR** so that the Colour Output signal becomes 29 ± 1 Vp-p for WV-CK1420/B, 36 ± 1 Vp-p for WV-CK1420/G, 32 ± 1 Vp-p for WV-CK2020/B and 38 ± 1 Vp-p for WV-CK2020/G as shown in Fig. 5-1.

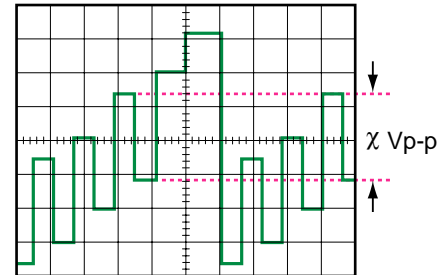


Fig. 5-1

(3). Purity Adjustment

Adjust : Purity Magnet **Deflection Coil**
Observe : Colour Monitor

- This adjustment should be done after aging for more than 30 minutes.
- Degauss the CRT using a Degaussing Coil.
- Supply the Cross-Hatch signal to the video Input Connector.
- Loosen both Deflection Coil Fixing Screw and Magnet Holding Screw.
- Adjust the Convergence roughly by the Convergence Magnet and Deflection Coil.
- Move Deflection Coil to the rear direction (CRT Socket Board side).
- Supply the Red Colour signal to the video Input Connector.
- Adjust the Purity Magnet so that the Red area comes to the center on the CRT Screen as shown in Fig. 5-2.
- Rotate the deflection coil to find the point where the red colour whose center portion becomes equal on the CRT Screen as shown in Fig 5-2.

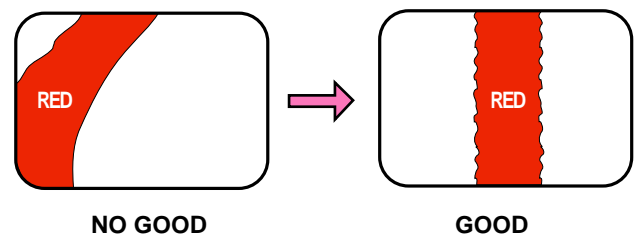


Fig. 5-2

- Move the deflection coil forward until red colour fully occupies the entire screen and tighten the deflection coil fixing screw.

- The magnets holding screw will be fastened after completing next step.

(4). Convergence Adjustment

Adjusts : **Convergence Magnet-1**
 Convergence Magnet-2

Observe : **Colour Monitor**

- Supply the Dot signal to the Video Input Connector.
- Adjust the **PICTURE** and **BRIGHT** so that much easy to see the picture on the Screen.
- Adjust the Convergence Magnet-1 as shown in Fig. 5-3 so that red and blue dots on the center area of the CRT Screen is overlapped.
- Adjust the Convergence Magnet-2 as shown in Fig. 5-3 so that the green and magenta (Red + Blue) dots on the center area of the CRT Screen is overlapped (dots becomes White).

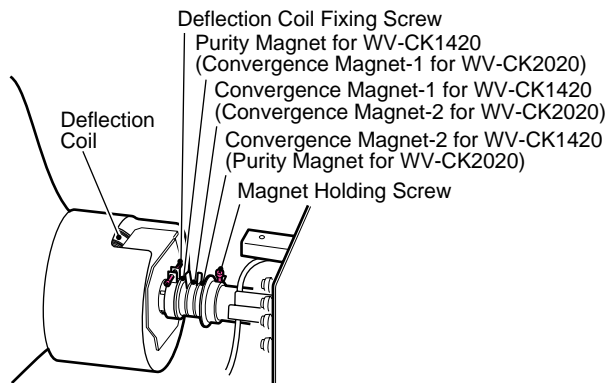


Fig. 5-3

- Change the signal from Dot signal to Cross-Hatch signal.
- If a discrepancy appears at the corner area, slightly adjust the Convergence Magnets 1 and 2.
- Repeat above adjustment (Convergence Magnets 1 and 2) until no discrepancy appears on the entire screen.
- Tighten the Magnets Holding Screw.

(5). White Balance Adjustment

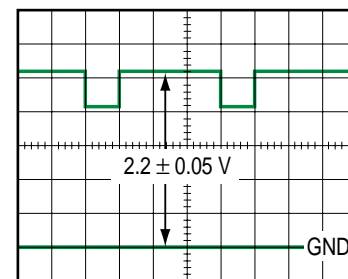
Test Point : **Pin 3 of A11 (G)** **Main Board**
 KG (Cathode of Green) CRT Socket Board

Adjust : **SCREEN Control**
 Flyback Transformer on the Main Board
 LEVEL CONTROL (+) **Main Board**
 LEVEL CONTROL (-) **Main Board**

Observe : **Colour Monitor**

- Supply the Monoscope signal to the Video Input Connector.
- Set the Service Mode and select the "CHK 1" mode.
- Select the **BRIGHT** Item.

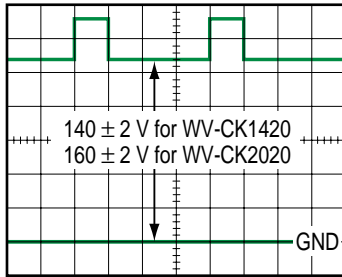
- Set the **BRIGHT** Item to the center position (32).
- Select the **CONTRAST** Item.
- Set the **CONTRAST** Item to the maximum position (63).
- Select the **PICTURE** Item.
- Set the **PICTURE** Item to the center position (32).
- Select the **COLOUR** Item.
- Set the **COLOUR** Item to the center position (32).
- Select the "CHK 2" Mode.
- Select **SUB BRIGHT** Item.
- Set the **R-CUTOFF** to (0), **G-CUTOFF** to (125) and **B-CUTOFF** to (0).
- Set the **R-DRIVE** to (40) and **B-DRIVE** to (40).
- Short between FA3 and ground by jumper wire.
- Set the **SCREEN** Control of the Flyback Transformer to fully counterclockwise direction.
- Connect the Oscilloscope to the pin 3 of Connector A11 on the Main Board.
- Adjust the **SUB BRIGHT** so that the voltage at the pin 3 of A11 becomes 2.2 ± 0.05 V DC as shown in Fig. 5-4.



Adjust center of scanning periode.

Fig. 5-4

- Remove the jumper wire from FA3 and ground.
- Set the **SCREEN** Control to clockwise direction for illuminating the Screen.
- Select the **G-CUTOFF** mode, short between FA3 and ground by jumper wire.
- Set the **SCREEN** Control to fully counterclockwise direction again.
- Connect the Oscilloscope to the Cathode of the Green on the CRT Socket Board.
- Adjust the **SUB BRIGHT** so that the voltage at the Cathode of the Green becomes 140 ± 2 V DC for WV-CK1420, 160 ± 2 V DC for WV-CK2020 as shown in Fig. 5-5.



Adjust center of scanning periode.

Fig. 5-5

- Turn the **SCREEN** Control slowly, and fix the green becomes just illuminated point.
- Adjust the other two low-lights so that the horizontal line becomes white.
- Remove the jumper wire from FA3 and ground.
- Adjust the **R-DRIVE** and **B-DRIVE** so that the most highest portion becomes White.

(6). HC, VC and VH Adjustment

Adjust : **LEVEL CONTROL (+)** **Main Board**
 LEVEL CONTROL (-) **Main Board**

Observe : **Colour Monitor**

- Set the "**CHK 3**" Mode.
- Supply the Monoscope signal to the Video Input Connector.
- Select the **HC** Item.
- Adjust the **HC** Data so that the Horizontal Position becomes center.
- Select the **VC** Item.
- Adjust the **VC** Data so that the Vertical Position becomes center.
- Select the **VH** Item.
- Adjust the **VH** Data so that the full Vertical Height becomes plus 8 % overscanning.

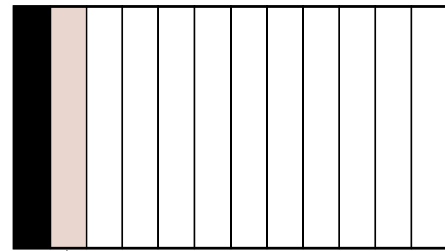
(7). Sub Bright Adjustment

Adjust : **LEVEL CONTROL (+)** **Main Board**
 LEVEL CONTROL (-) **Main Board**

Observe : **Colour Monitor**

- Turn ON the Power Switch.
- Set the "**CHK 1**" Mode.
- Select the **BRIGHT** Item.
- Set the **BRIGHT** Item to the center position (32).
- Select the **CONTRAST** Item.
- Set the **CONTRAST** Item to the center position (32).
- Select the **PICTURE** Item.
- Set the **PICTURE** Item to the center position (32).
- Supply the Black Level Pattern signal to the Video Input Connector.

- Adjust **SUB BRIGHT** Data so that the second portion becomes slightly lit as shown in Fig. 5-6.



Adjust the Sub-Bright so that the second portion becomes slightly lit.

Fig. 5-6

(8). Focus Adjustment

Adjust : **FOCUS Control**

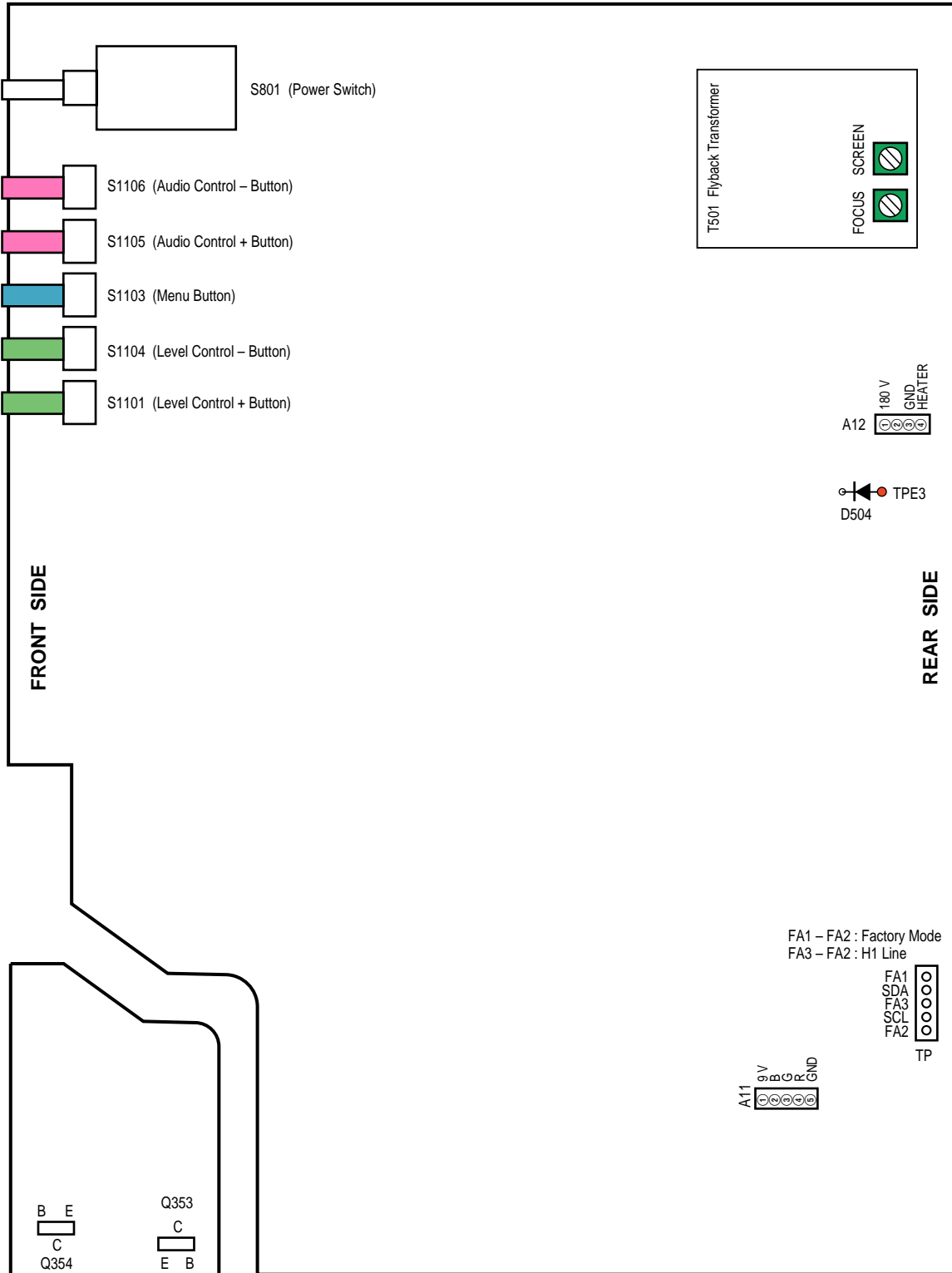
Flyback Transformer on the Main Board

Observe : **Colour Monitor**

- Supply the Dot signal or Cross-Hatch signal to the Video Input Connector.
- Adjust the **FOCUS** Control on the Flyback Transformer to best focal point.

LOCATION OF TEST POINTS AND ADJUSTING CONTROLS

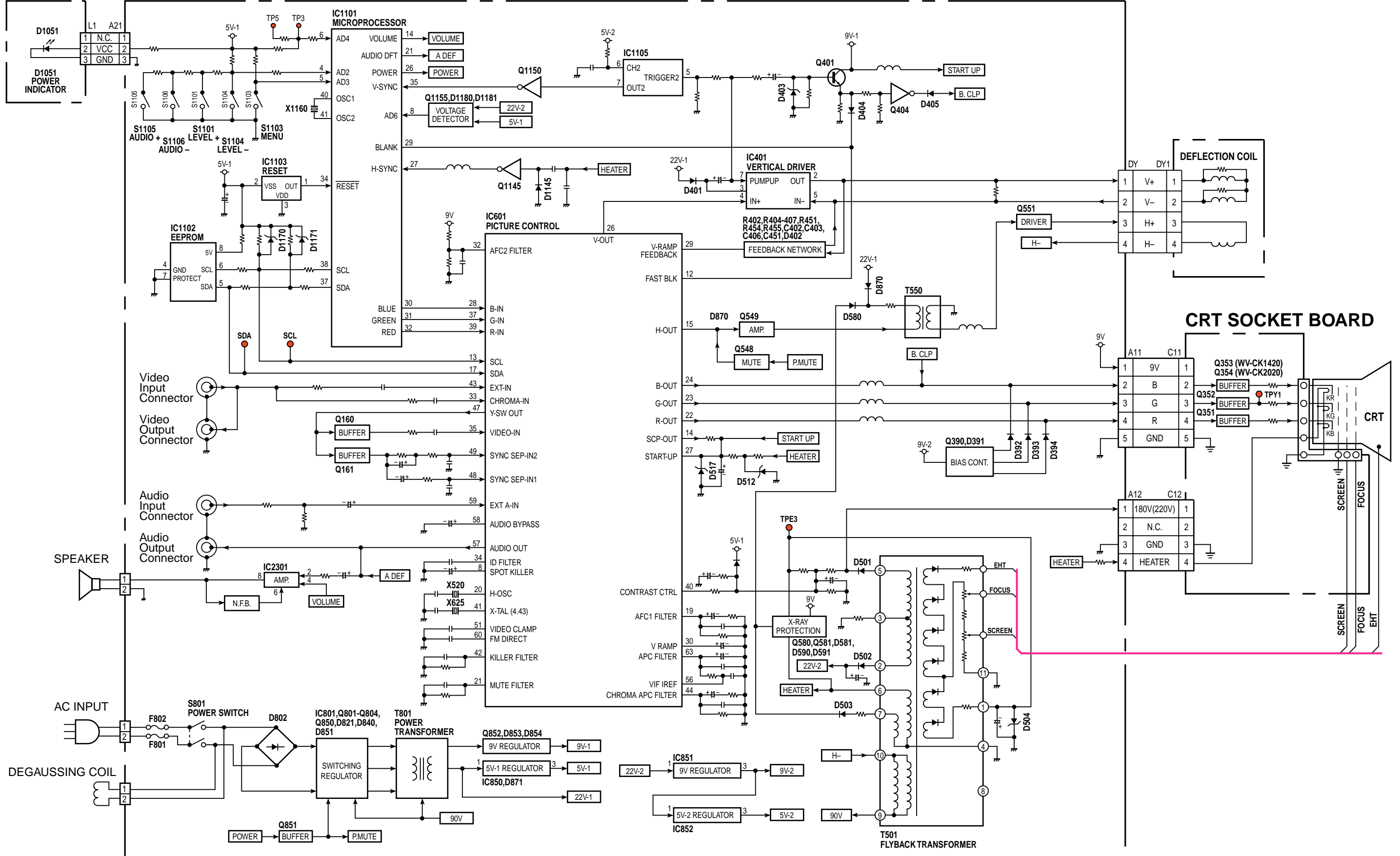
MAIN BOARD (COMPONENT SIDE)



CRT SOCKET BOARD (COMPONENT SIDE)

BLOCK DIAGRAM

LED BOARD MAIN BOARD



CONDUCTOR VIEW

CRT SOCKET BOARD

(COMPONENT SIDE)

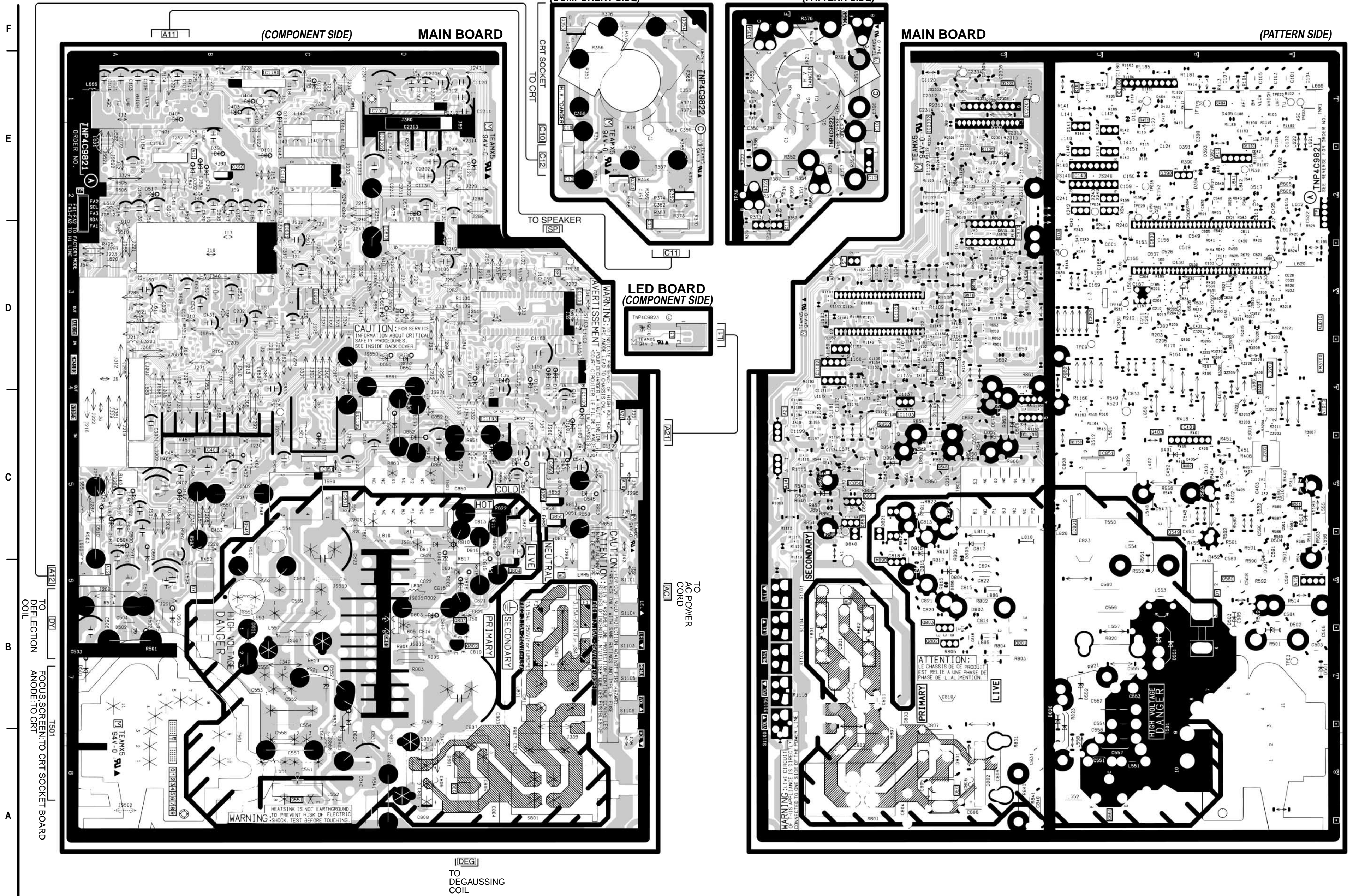
(PATTERN SIDE)

(COMPONENT SIDE)

MAIN BOARD

MAIN BOARD

(PATTERN SIDE)



F
E
D
C
B
A

1 2 3 4 5 6 7 8

< INDEX >
MAIN BOARD

IC401 C2	IC1105 C3	Q580 B8	Q1145 D6	D403 E2	D517 E1	D803 B3	D840 C4	D840 C4	D1145 D3
IC361 C3	Q581 C8	Q581 C8	D404 E2	D404 E2	D518 E2	D804 B3	D850 C3	D850 C3	D1150 D4
IC801 C3	Q160 D7	Q801 B3	Q1155 C5	D405 E1	D522 B2	D805 C3	D851 C4	D851 C4	D1170 D4
IC850 C4	Q161 D7	Q802 B3	D391 E2	D501 B1	D806 C3	D806 B3	D852 C4	D852 C4	D1171 D4
IC851 C2	Q390 E2	Q803 B3	D392 E2	D502 B1	D581 C1	D815 B3	D815 B3	D853 C3	D1180 C4
IC852 D2	Q401 E2	Q804 B3	D393 E2	D503 B1	D590 C1	D816 C3	D816 C3	D854 C3	D1181 C4
IC1101 D4	Q404 E2	Q850 C4	D394 E2	D504 C1	D391 C1	D817 C3	D817 C3	D870 C3	
IC1102 D4	Q549 C2	Q851 C4	D401 C2	D510 C1	D801 A3	D820 A2	D820 A2	D871 C4	
IC1103 C3	Q551 A2	Q852 C3	D402 C1	D512 C2	D802 A3	D821 C3	D821 C3	D1120 E3	

< INDEX >
CRT SOCKET BOARD

Q351 E4	D1051 D4
Q352 E4	
Q353 F4	
Q354 F4	

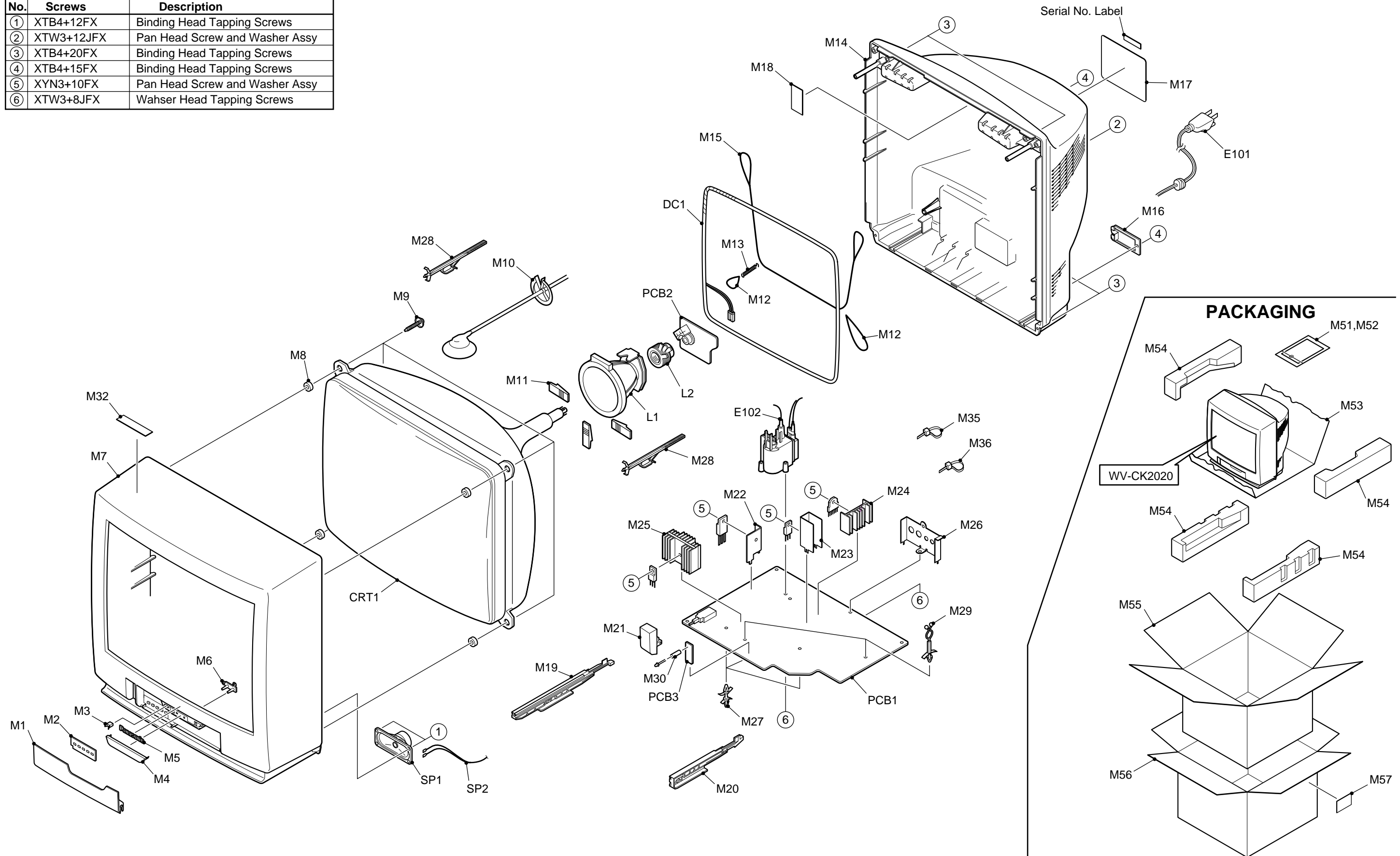
< INDEX >
LED BOARD

D1051 D4

EXPLODED VIEW OF WV-CK2020

○ Numbers show screws, washers, nuts and etc.

No.	Screws	Description
①	XTB4+12FX	Binding Head Tapping Screws
②	XTW3+12JFX	Pan Head Screw and Washer Assy
③	XTB4+20FX	Binding Head Tapping Screws
④	XTB4+15FX	Binding Head Tapping Screws
⑤	XYN3+10FX	Pan Head Screw and Washer Assy
⑥	XTW3+8JFX	Wahser Head Tapping Screws



REPLACEMENT PARTS LIST

Important Notice

- Components identified by " △ " mark have special characteristics important for safety.
When replacing any of these components, use only manufacturer's specified parts.
- RTL : Retention Time Limited (No longer available after discontinuing product).

REF. NO.	PART NO.	DESCRIPTION	REF. NO.	PART NO.	DESCRIPTION
COLOUR MONITOR WV-CK1420			MAIN BOARD		
MISCELLANEOUS			PCB1 (RTL)	CK1420/B-CMA	Printed Circuit Board Assy for WV-CK1420/B
CRT1 △	A34AGT13X31K	14" Cathode Ray Tube	PCB1 (RTL)	CK1420/G-CMA	Printed Circuit Board Assy for WV-CK1420/G
DC1 △	TLK4C9006T	Degaussing Coil	IC401	LA7840	IC
L1	CK1420-DY	Deflection Coil	IC601	M52770ASP	IC
L2	CK1420-CY	Purity Magnet Assy	IC801	SE090NLF4	IC
SP1	EAS65P309T	Speaker	IC850	AN78M05	IC
SP2	CK1420AWPB	Wire Assy for Speaker	IC851	AN78M09	IC
E101 △	TSX4C1A013B	AC Power Cord Assy for WV-CK1420/B	IC852	AN78M05	IC
	TSX4C1A013G	AC Power Cord Assy for WV-CK1420/G	IC1101	MN1871681TG	IC
E102	FBTFS2831-2	Wire Assy	IC1102	S24C02ADP-P	IC
M1	TKK4C1A032A	Smoke Cover	IC1103	S-80741AL-Z	IC
M2	TBX4C1A060	Hinge Button	IC1105	BA225	IC
M3	TBX4C1A061	Power Button	IC2301	YWAN5265	IC
M4	TBM4C1A02701	Panasonic Badge	Q160,161	2SB709A-RS	Transistor
M5 △	TKY4C1A002E	Front Cabinet Assy	Q390	2SA564A-R	Transistor
M6	XWG5E20FCX	CRT Washer	Q401	2SD601A-QR	Transistor
M7	TMM4C1A007	CRT GUM	Q404	2SD601A-QR	Transistor
M8	THT4C1A535	Screw for CRT	Q549	2SD1275A-P	Transistor
M9 △	TMM15404-1	H.V Wire Clamper	Q551	2SD2499LBMA	Transistor
M10	TKK4C1A037-B	LED Spacer	Q580,581	2SB709A-RS	Transistor
M11	CK142020WPA	14" C.R.T. Wire	Q801	2SC5241	Transistor
M12	XF5B10K40171	Rope	Q802,803	2SD789ETZ	Transistor
M13	TES201	Spring	Q804	2SC945AQ	Transistor
M14 △	TKK4C1A07101	Cord Clamp	Q850,851	2SC945AQ	Transistor
M15 △	TQF4C1A06801	Main Label for WV-CK1420/B	Q852	2SD1275A-P	Transistor
	TQF4C1A06802	Main Label for WV-CK1420/G	Q1145	2SD601A-QR	Transistor
M16 △	TKU4C1A002D	Rear Cover	Q1150	2SD601A-QR	Transistor
M17	TMM6024-1	DY GUM	Q1155	2SD601A-QR	Transistor
M19	THT4C1A415	Screw for Speaker	D391-394	MA165	Diode
M26	TMM4C1A053	PCB Support	D401	ERA15-01V5	Diode
M29	TMM6428-1	Clamper	D402	MA4360-M	Diode
M32 △	TQF4C1A075	X-Ray Label for WV-CK1420/G	D403	MA4047-H	Diode
M34 △	TQF4C1A07401	CRT Caution Label for WV-CK1420/B	D404,405	MA165	Diode
	TQF4C1A07402	CRT Caution Label for WV-CK1420/G	D501-503	AU02V0	Diode
M35	TMM5402-1	Wire Clamper A	D504	MA4330-M	Diode
M36	TMM81416	Wire Clamper B	D510	AU02V0	Diode
			D512	MA4056L	Diode
			D517	MA4110-H	Diode
			D551	ERB06-15V1	Diode
			D552	TVSRU2AMV1	Diode
			D580	YWD1NL20U	Diode
			D581	MA4360-L	Diode
			D590	MA4108J	Diode
			D591	MA171	Diode
			D801 △	DGC3R05M	Posistor

REF. NO.	PART NO.	DESCRIPTION	REF. NO.	PART NO.	DESCRIPTION
D802	△ D4SB80	Diode	R455	ERJ6GEYJ221	Carbon 220 ohms 1/10W
D803	MA4120-M	Diode	R501	ERQ12HJ1R0	Fuse Resistor 1 ohm 1/12W
D804	YWD1NL20U	Diode	R502	ERQ12ZJ1R0	Fuse Resistor 1 ohm 1/12W
D805	MA4150M	Diode	R503	ER025TKF1803	Metal 180K ohms 1/4W
D806	MA4051-H	Diode	R504	ERJ6GEYJ223	Carbon 22K ohms 1/10W
D815,816	YWD1NL20U	Diode	R510	ERJ6GEYJ563	Carbon 56K ohms 1/10W
D817	YWS2L60	Diode	R511	ERJ6GEYJ104	Carbon 100K ohms 1/10W
D820	TVSSR2KSV1	Diode	R513	ERJ6GEYJ152	Carbon 1.5K ohms 1/10W
D821	0N3131R	Photocoupler	R514	ERQ2CJP2R7S	Fuse Resistor 2.7 ohms 20W
D840	△ YWPC123FY2	Photocoupler	R515	ERJ6GEYJ393	Carbon 39K ohms 1/10W
D850	YWD1NL20U	Diode	R516	ERJ6GEYJ222	Carbon 2.2K ohms 1/10W
D851	MA4024-H	Diode	R519	ERJ6GEYJ222	Carbon 2.2K ohms 1/10W
D852	EU02V0	Diode	R520	ERJ6GEYJ562	Carbon 5.6K ohms 1/10W
D853	MA4082M	Diode	R521	ERJ6GEYJ915V	Carbon 9.1M ohms 1/10W
D854	MA27TA	Diode	R523	ERJ6GEYJ273	Carbon 27K ohms 1/10W
D870	YWD1NL20U	Diode	R524	ERJ6GEYJ684	Carbon 680K ohms 1/10W
D871	MA4056-H	Diode	R525	ERJ6GEYJ224	Carbon 220K ohms 1/10W
D1120	MA165	Diode	R526	ERJ6GEYJ471	Carbon 470 ohms 1/10W
D1145	MA165	Diode	R530	ERJ6GEYJ101	Carbon 100 ohms 1/10W
D1160	MA4056L	Diode	R547	ERG2ANJ101	Metal 100 ohms 2W
D1170	MA4068M	Diode	R549	ERJ6GEYJ222	Carbon 2.2K ohms 1/10W
D1171	MA4068M	Diode	R548	ERJ6GEYJ102	Carbon 1K ohms 1/10W
D1180	MA4150M	Diode	R550	ERG2ANJ471	Metal 470 ohms 2W
D1181	MA4180-M	Diode	R552	ERQ1CJP102S	Fuse Resistor 1K ohms 1W
R160	ERJ6GEYJ221	Carbon 220 ohms 1/10W	R580	ERDS2TJ823	Carbon 82K ohms 1/4W
R161	ERJ6GEYJ334	Carbon 330K ohms 1/10W	R581	ERJ6GEYJ103	Carbon 10K ohms 1/10W
R162	ERJ6GEYJ330	Carbon 33 ohms 1/10W	R582	ERD2FAVJ1R5	Carbon 1.5 ohms 2W
R163	ERJ6GEYJ332	Carbon 3.3K ohms 1/10W	R585	ERJ6GEYJ334	Carbon 330K ohms 1/10W
R164	ERDS2TJ271	Carbon 270 ohms 1/4W	R584	ERJ6GEYJ103	Carbon 10K ohms 1/10W
R166	ERDS2TJ391	Carbon 390 ohms 1/4W	R586	ERJ6GEYJ683	Carbon 68K ohms 1/10W
R167	ERJ6GEYJ181	Carbon 180 ohms 1/10W	R587	ERJ6GEYJ104	Carbon 100K ohms 1/10W
R168	ERJ6GEYOR00	Carbon 0 ohm 1/10W	R588	ERJ6GEYJ103	Carbon 10K ohms 1/10W
R170	ERJ6GEYJ471	Carbon 470 ohms 1/10W	R589	ERJ6GEYJ223	Carbon 22K ohms 1/10W
R201	ERJ6GEYJ471	Carbon 470 ohms 1/10W	R590	ERJ6ENF1962V	Carbon 19.6K ohms 1/10W
R202	ERJ6GEYJ102	Carbon 1K ohms 1/10W	R591	ERJ6ENF1472	Carbon 14.7K ohms 1/10W
R203	ERDS2TJ391	Carbon 390 ohms 1/4W	R592	ERJ6GEYJ100	Carbon 10 ohms 1/10W
R211	ERJ6GEYJ823	Carbon 82K ohms 1/10W	R605	ERD25FJ100	Carbon 10 ohms 1/4W
R212	ERJ6GEYJ103	Carbon 10K ohms 1/10W	R606	ERD25FJ100	Carbon 10 ohms 1/4W
R390	ERDS2TJ102	Carbon 1K ohms 1/4W	R620	ERJ6GEYJ221	Carbon 220 ohms 1/10W
R402	ERJ6GEYJ182	Carbon 1.8K ohms 1/10W	R621	ERDS2TJ471	Carbon 470 ohms 1/4W
R404	ERJ6GEYJ222	Carbon 2.2K ohms 1/10W	R625	ERJ6GEYJ155V	Carbon 1.5M ohms 1/10W
R405	ERJ6GEYJ621	Carbon 620 ohms 1/10W	R627	ERJ6GEYJ472	Carbon 4.7K ohms 1/10W
R406	ERDS1FJ2R2	Carbon 2.2 ohms 1W	R628	ERJ6GEYJ915V	Carbon 9.1M ohms 1/10W
R407	ERJ6GEYJ561	Carbon 560 ohms 1/10W	R640-642	ERJ6GEYJ821	Carbon 820 ohms 1/10W
R410	ERJ6GEYJ103	Carbon 10K ohms 1/10W	R643-645	ERJ6GEYJ331	Carbon 330 ohms 1/10W
R411	ERJ6GEYJ562	Carbon 5.6K ohms 1/10W	R650-652	ERJ6GEYJ911	Carbon 910 ohms 1/10W
R412	ERJ6GEYJ472	Carbon 4.7K ohms 1/10W	R653	ERJ6GEYJ562	Carbon 5.6K ohms 1/10W
R413	ERDS2TJ222	Carbon 2.2K ohms 1/4W	R654	ERD25FJ272	Carbon 2.7K ohms 1/4W
R414	ERJ6GEYJ333	Carbon 33K ohms 1/10W	R801	TRF7ZK2R2T-1	Cement 2.2 ohms
R420	ERJ6GEYJ154	Carbon 150K ohms 1/10W	R802	ERG2ANJ150	Metal 15 ohms 2W
R421	ERJ6GEYJ271	Carbon 270 ohms 1/10W	R803	ERDS1TJ154	Carbon 150K ohms 1/4W
R425	ERDS2TJ223	Carbon 22K ohms 1/4W	R804	ERDS1TJ154	Carbon 150K ohms 1/4W
R451	ERDS1FJ2R2	Carbon 2.2 ohms 1W	R805	ERDS2TJ393	Carbon 39K ohms 1/4W
R453	ERJ6GEYJ102	Carbon 1K ohms 1/10W	R806	ERG3ANJ391	Metal 390 ohms 3W
R454	ERDS2TJ751	Carbon 3.3K ohms 1/4W	R807	△ ERC12ZGK335C	Solid 3.3M ohms 1/2W

REF. NO.	PART NO.	DESCRIPTION		REF. NO.	PART NO.	DESCRIPTION	
R810	ERDS2TJ123	Carbon	12K ohms 1/4W	R2310	ERDS2TJ4R7	Carbon	4.7 ohms 1/4W
R811	ERD50FJ182	Carbon	1.8K ohms 1/4W	R2311	ERQ2CJP100S	Fuse Resistor	10 ohms 20W
R812	ERDS2TJ751	Carbon	750 ohms 1/4W	R2312	ERDS2TJ222	Carbon	2.2K ohms 1/4W
R815	ERG2ANJ470	Metal	47 ohms 2W	R2313	ERDS2TJ102	Carbon	1K ohms 1/4W
R816	ERG2ANJ102	Metal	1K ohms 2W	R2314	ERDS2TJ562	Carbon	5.6K ohms 1/4W
R817	ERDS1TJ222	Carbon	2.2K ohms 1W	R2320	ERJ6GEYJ182	Carbon	1.8K ohms 1/10W
R820	TRF7ZK272T-1	Cement	2.2 ohms	R2321	ERJ6GEYJ823	Carbon	82K ohms 1/10W
R821	ERG2ANJ153W	Metal	15K ohms 2W	R2322	ERJ6GEYJ183	Carbon	18K ohms 1/10W
R822	ERG1ANJ332	Metal	3.3K ohms 1W	R3007	ERJ6GEYJ750	Carbon	75 ohms 1/10W
R841	△ ERC12ZGK825C	Solid	8.2M ohms 1/2W	JA6	ERJ6GEYJ0R00	Carbon	0 ohm 1/10W
R850	ERDS1TJ152	Carbon	1.5K ohms 1W	JA15-17	ERJ6GEYJ0R00	Carbon	0 ohm 1/10W
R851	ERDS2TJ241	Carbon	240 ohms 1/4W	JA20,21	ERJ6GEYJ0R00	Carbon	0 ohm 1/10W
R852	ERG2ANJ222	Metal	2.2K ohms 2W	JA30,31	ERJ6GEYJ0R00	Carbon	0 ohm 1/10W
R853	ERG2ANJ221	Metal	220 ohms 2W	JS2303	ERJ6GEYJ473	Carbon	47K ohms 1/10W
R854	ERG2SJ222	Metal	2.2K ohms 2W	C116	ECQM1H104JV	Polyester	0.1 µF 50V
R855	ERDS2TJ102	Carbon	1K ohms 1/4W	C155	ECEA1CTK470B	Electrolytic	47 µF 16V
R856	ERDS2TJ102	Carbon	1K ohms 1/4W	C156	ECUV1H103ZFN	Ceramic	0.01 µF
R857	ERDS2TJ202	Carbon	2K ohms 1/4W	C160	ECEA1HTK100B	Electrolytic	10 µF 50V
R860	ERQ16NK1R0E	Fuse Resistor	1 ohm 1/10W	C161	ECQM1H104JZ	Polyester	0.1 µF 50V
R861	ERG2ANJ3R3W	Metal	3.3 ohms 2W	C165	ECUV1H101JCN	Ceramic	100 pF
R862	ERG2ANJ6R2W	Metal	6.2 ohms 2W	C168	ECEA1HTKR33B	Electrolytic	0.33 µF 50V
R863	ERG2ANJ3R3W	Metal	3.3 ohms 2W	C169	ECUV1H221JCN	Ceramic	220 pF
R1053	ERJ6GEYJ681	Carbon	680 ohms 1/10W	C201	ECUV1C683KBN	Ceramic	0.068 µF
R1101	ERJ6ENF1002V	Carbon	10K ohms 1/16W	C202	ECEA1HTK3R3B	Electrolytic	3.3 µF 50V
R1109	ERD25FJ101	Carbon	100 ohms 1/4W	C203	ECEA1CTK100B	Electrolytic	10 µF 16V
R1110	ERJ6GEYJ223	Carbon	22K ohms 1/10W	C204	ECUV1H222KBN	Ceramic	2200 pF
R1115	ERJ6ENF1002V	Carbon	10K ohms 1/16W	C211	ECA1HEN010	Electrolytic	1 µF 50V
R1116	ERJ6ENF2201V	Carbon	2.2 ohms 1/10W	C350	ECKR1H331KB	Ceramic	330 pF
R1117	ERJ6ENF2201V	Carbon	2.2 ohms 1/10W	C351	ECKF1H391KB	Ceramic	390 pF
R1118	ERJ6ENF3301	Carbon	3.3 ohms 1/10W	C352	ECKR1H331KB	Ceramic	330 pF
R1120	ERJ6ENF1002V	Carbon	10K ohms 1/16W	C353	ECKF1H391KB	Ceramic	390 pF
R1121	ERJ6GEYJ103	Carbon	10K ohms 1/10W	C354	ECKW3D821KBP	Ceramic	820 pF
R1122	ERJ6GEYJ103	Carbon	10K ohms 1/10W	C356	ECKD2H103PE	Ceramic	0.01 µF
R1127	ERJ6GEYJ563	Carbon	56K ohms 1/10W	C390	ECEA1CTK331B	Electrolytic	330 µF 16V
R1143	ERD25FJ101	Carbon	100 ohms 1/4W	C401	ECEA1VTK102E	Electrolytic	1000 µF 35V
R1145	ERJ6GEYJ222	Carbon	2.2K ohms 1/10W	C402	ECEA1VTK100B	Electrolytic	10 µF 35V
R1146	ERJ6GEYJ103	Carbon	10K ohms 1/10W	C403	ECEA1VTK222E	Electrolytic	2200 µF 35V
R1150	ERJ6GEYJ182	Carbon	1.8K ohms 1/10W	C405,406	ECUV1H102KBN	Ceramic	1000 pF
R1151-1153	ERJ6GEYJ562	Carbon	5.6K ohms 1/10W	C410	ECEA1HTKR22B	Electrolytic	0.22 µF 50V
R1156	ERD25TJ102	Carbon	1K ohms 1/4W	C420	ECUV1E104KBN	Ceramic	0.1 µF
R1157	ERJ6GEYJ101	Carbon	100 ohms 1/10W	C425	ECSF1EE105	Tantalum	1 µF 25V
R1158	ERJ6GEYJ101	Carbon	100 ohms 1/10W	C430	ECUV1H103KBN	Ceramic	0.01 µF
R1160	ERJ6GEYJ683	Carbon	68K ohms 1/10W	C431	ECEA1H010B	Electrolytic	1 µF 50V
R1161	ERJ6GEYJ223	Carbon	22K ohms 1/10W	C451	ECQE1224KF	Metal	0.22 µF
R1162	ERJ6ENF1243V	Carbon	124K ohms 1/10W	C452	ECA1VHG101B	Electrolytic	100 µF 35V
R1163	ERJ6GEYJ122	Carbon	1.2K ohms 1/10W	C453	ECQM1H333JZM	Polyester	0.033 µF 50V
R1164	ERJ6GEYJ682	Carbon	6.8K ohms 1/10W	C501	ECEA1HTK0R1B	Electrolytic	0.1 µF 50V
R1170,1171	ERJ6GEYJ560	Carbon	56 ohms 1/10W	C503,504	ECKR2H471KB5	Ceramic	470 pF
R1172,1173	ERJ6GEYJ332	Carbon	3.3K ohms 1/10W	C505	ECKR2H561KB	Ceramic	560 pF
R1174	ERDS2TJ470	Carbon	47 ohms 1/4W	C506	ECA2EHG100E	Electrolytic	10 µF 250V
R1193	ERJ6GEY0R00	Carbon	0 ohm 1/10W	C507	ECEA1ETK471E	Electrolytic	470 µF 25V
R1194	ERJ6GEYJ102	Carbon	1K ohms 1/10W	C508	ECEA1VTK332E	Electrolytic	3300 µF 35V
R1196	ERJ6GEYJ104	Carbon	100K ohms 1/10W	C510	ECEA1ATK470B	Electrolytic	47 µF 10V
R1195-1198	ERJ6GEYJ103	Carbon	10K ohms 1/10W	C519	ECUV1H330JCN	Ceramic	33 pF
R1199	ERJ6GEYJ102	Carbon	1K ohms 1/10W	C520	ECEA1HTK010B	Electrolytic	1 µF 50V

REF. NO.	PART NO.	DESCRIPTION	REF. NO.	PART NO.	DESCRIPTION
C521	ECUV1H332KBN	Ceramic 3300 pF	C825	ECKW3D102KB	Ceramic 1000 pF
C522	ECQM1H822KZ	Polyester 8200 pF 50V	C828	ECA1EHG331B	Electrolytic 330 pF 25V
C525	ECEA1HTK3R3B	Electrolytic 3.3 μF 50V	C830	ECEA0JTK101B	Electrolytic 100 μF 6.3V
C526	ECUV1H103ZFN	Ceramic 0.01 μF	C831	ECA160V33UE	Electrolytic 33 μF 160V
C530	ECUV1H122KBN	Ceramic 1200 pF	C833	ECA1CHG101	Electrolytic 100 μF 16V
C531	ECEA1HTK010B	Electrolytic 1 μF 50V	C840	ECKNA222MEB	Ceramic 2200 pF
C540	ECUV1H561JUN	Ceramic 560 pF	C850	ECA1EHG102E	Electrolytic 1000 μF 25V
C546	ECEA1HTK010B	Electrolytic 1 μF 50V	C851	ECKR2H471KB5	Ceramic 470 pF
C548	ECQM1H123JZ	Polyester 0.012 μF 50V	C852	ECKR2H222KB5	Ceramic 2200 pF
C551	ECKW3D221KBP	Ceramic 220 pF	C853	ECA1HHG221	Electrolytic 220 μF 50V
C552	ECWH12H123JS	Polypropylene 0.012 μF	C854	ECA1CHG100B	Electrolytic 10 μF 16V
C553	ECQM4223JZB	Polyester 0.022 μF	C858	ECQM1H473JZ	Polyester 0.047 μF 50V
C555	ECQM4273JZB	Polyester 0.027 μF	C870	ECEA1VTK101B	Electrolytic 100 μF 35V
C558	ECKW3D152KBP	Ceramic 1500 pF	C871	ECEA0JTK101B	Electrolytic 100 μF 6.3V
C559	ECQF2H564JZA	Polypropylene 0.56 μF 500V	C1101	ECUV1H471JCN	Ceramic 470 pF
C580	ECEA1ATK330B	Electrolytic 33 μF 10V	C1102	ECUV1H103ZFN	Ceramic 0.01 μF
C581	ECEA1JTK100B	Electrolytic 10 μF 63V	C1120	ECEA1HTK010B	Electrolytic 1 μF 50V
C582	ECEA1HTK010B	Electrolytic 1 μF 50V	C1135	ECUV1H103ZFN	Ceramic 0.01 μF
C585	ECUV1H104ZFN	Ceramic 0.1 μF	C1137	ECEA1CTK220B	Electrolytic 22 μF 16V
C590	ECEA1VTK101B	Electrolytic 100 μF 35V	C1138	ECUV1H103ZFN	Ceramic 0.01 μF
C591	ECKR2H331KB	Ceramic 330 pF	C1145	ECUV1H681JCN	Ceramic 680 pF
C601	ECEA1HTKR22B	Electrolytic 0.22 μF 50V	C1146	ECUV1H101JCN	Ceramic 100 pF
C604	ECUV1H680JCN	Ceramic 68 pF	C1149	ECUV1H560JCN	Ceramic 56 pF
C605	ECUV1H103ZFN	Ceramic 0.01 μF	C1151-1153	ECUV1H820JCN	Ceramic 82 pF
C606	ECEA1CTK470B	Electrolytic 47 μF 16V	C1156	ECUV1H102JCN	Ceramic 1000 pF
C610	ECA1AHG471B	Electrolytic 470 μF 10V	C1157	ECUV1H103ZFN	Ceramic 0.01 μF
C611-613	ECUV1E104ZFN	Ceramic 0.1 μF	C1160	ECEA1CTK471B	Electrolytic 470 μF 16V
C615	ECEA0JTK101B	Electrolytic 100 μF 6.3V	C1161	ECUV1H103ZFN	Ceramic 0.01 μF
C616	ECUV1H223ZFN	Ceramic 0.022 μF	C1170,1171	ECUV1H101JCN	Ceramic 100 pF
C620,621	ECUV1H223KBN	Ceramic 0.022 μF	C1172	ECUV1H103ZFN	Ceramic 0.01 μF
C622	ECUV1C224KBN	Ceramic 0.22 μF	C1173	ECEA1CTK100B	Electrolytic 10 μF 16V
C625	ECUV1H220JCN	Ceramic 22 pF	C1174	ECUV1H103ZFN	Ceramic 0.01 μF
C626	ECUV1H103KBN	Ceramic 0.01 μF	C1199	ECEA0JTK220B	Electrolytic 22 μF 6.3V
C627	ECEA1HTKR47B	Electrolytic 0.47 μF 50V	C2302	ECEA1CTK100B	Electrolytic 10 μF 16V
C628	ECUV1H153KBN	Ceramic 0.015 μF	C2305	ECEA1CTK100B	Electrolytic 10 μF 16V
C630	ECUV1H151JCN	Ceramic 150 pF	C2306	ECEA1ETK220B	Electrolytic 22 μF 25V
C640-642	ECUV1H330JCN	Ceramic 33 pF	C2307	ECEA1ETK102E	Electrolytic 1000 μF 25V
C633	ECEA1ATK331B	Electrolytic 330 μF 10V	C2309	ECEA1ETK102E	Electrolytic 1000 μF 25V
C634	ECUV1H103ZFN	Ceramic 0.01 μF	C2310	ECQM1H683JZ	Polyester 0.068 μF 50V
C645-647	ECUV1H680JCN	Ceramic 68 pF	C2311	ECQM1H683JV3	Polyester 0.068 μF 50V
C801	△ ECQU2A224KHB	Metal 0.22 μF 100V	C2313	ECUV1H332JCN	Polyester 3300 pF 50V
C802	△ ECQU2A104MNB	Metal 0.1 μF 100V	C2314	ECEA1HTK2R2B	Electrolytic 2.2 μF 50V
C803	△ ECKCNA471MEB	Ceramic 470 pF	C3209 (R3209)	ERJ6GEY0R00	Carbon 0 ohm 1/10W
C805	ECKD2H103PE	Ceramic 0.01 μF	L150	ELEP4CJ101KA	Peaking Coil
C806-809	ECKW2H472PE	Ceramic 4700 pF	L402	TSKA075	Coil
C810	△ EC0S2DA271CB	Electrolytic 270 μF 200V	L501	TSKA075	Coil
C814	ECKW3D152KBP	Ceramic 1500 pF	L551,552	TSKA075	Coil
C815	ECQM1H154KZ	Polyester 0.15 μF 50V	L553	TLH4C6623P-1	Linearity Coil
C816	ECQM1H103JZ	Polyester 0.01 μF 50V	L555	TSKA077	Coil
C817	ECQM1H473JZ	Polyester 0.047 μF 50V	L557	TSKA077	Coil
C818	ECA1AHG101B	Electrolytic 100 μF 10V	L558	TSKA075	Coil
C820,821	ECQM1H223JZ	Polyester 0.022 μF 50V	L580	TSKA077	Coil
C822	ECKW3D222KBP	Ceramic 2200 pF	L620	TSKA077	Coil
C823	EC0S2CA681CB	Electrolytic 680 μF 160V	L611	TSKA075	Coil
C824	ECKW3D821KBP	Ceramic 820 pF	L612	ELEP4CJR47KA	Peaking Coil

REF. NO.	PART NO.	DESCRIPTION	REF. NO.	PART NO.	DESCRIPTION
L640-642 L801 Δ L810,850 L870 L1104	TL0ABTA100K ELF18D666D TSKA075 TSKA075 TL0ABTA100K	Peaking Coil Line Filter Coil Coil Peaking Coil	CRT SOCKET BOARD		
L1135 L1140 L1151 L1152 J26	TL0ABTA100K TL0ABTA100K TL0ABTA100K TSKA069 XEA6150	Peaking Coil Peaking Coil Peaking Coil Coil Jumper	PCB2 (RTL) Q351-353 R351-353 R354-356 R366-368	CK1420/G-CMC 2SC2258 ERG2ANJ123 ERDS1TJ272 ERDS2TJ391	Printed Circuit Board Assy Transistor Metal 12K ohms 2W Carbon 2.7K ohms 1W Carbon 390 ohms 2W
J212 J248 J307 J400,401 JS502	TSKA075 XEA6160 TSKA077 XEA6160 TSKA075	Coil Jumper Coil Jumper Coil	R369-371 R372-374 C350 C351 C352	ERDS2TJ562 ERDS2TJ101 ECKF1H331KB ECKF1H391KB ECKF1H331KB	Carbon 5.6K ohms 2W Carbon 100 ohms 2W Ceramic 330 pF Ceramic 390 pF Ceramic 330 pF
S1101 S1103-1106 S801 Δ T501 Δ T550 Δ	EVO4CTSVM-2T EVO4CTSVM-2T ESB92DA1B ETF-39L51AYT TLH15462M	TACT Switch TACT Switch Power Switch Flyback Transformer Transformer	C353 C354 C356 CN1 (JK14) Δ CN11	ECKF1H391KB ECKW3D821KBN ECKD2H103PE TJS1A5081 CK1420A11S5	Ceramic 390 pF Ceramic 820 pF Ceramic 0.01 μ F CRT Socket Wire Assy for Main Board CN11
T801 Δ X520 X625 X626 X1160	ETS29AK286NC TAFCSB500F48 TSS4C816M32T TSS44A002T EF0EC1205B4	Transformer Crystal Oscillator Crystal Oscillator Crystal Oscillator Crystal Oscillator	CN12	CK1420A12S4	Wire Assy for Main Board CN12
F1-4 Δ F801,802 Δ TP CN11 (A11) CN12 (A12)	TP00351-51 XBA2C31TR0 TJS4CP05-L TJS4C63574TA TJS4C63573TA	Fuse Holder Fuse 3.15A 250V 5-pin Connector 5-pin Connector 4-pin Connector	LED BOARD		
CN14 (A21) M21 M22 M23 M24	TJS5A8730 TUC4C1A066 TUC4C1A068 TUC4C1A069 TUC4C1A054A	3-pin Connector Heat Sink for Q801 Heat Sink for Q551 Heat Sink for IC851 Heat Sink for IC401	PCB3 (RTL) D1051 CN1 (L1) M28	CK1420/G-CML SLR-56VC3F TJS5A8750 TMM4C1A044	Printed Circuit Board Assy LED (Red) 3-pin Connector LED Holder
M25 (EM3100)	TJB4C1A030	AV Connector Assy	ACCESSORY PARTS / PACKAGING PARTS		
			M51 Δ M52 M53 M54 M55	TQB4C1A188 TPE4C1A00201 TPE4C1A012 TPD4C1A002B TPC4C1A23301 TPC4C1A23302	Operating Instructions Polyethylene Bag Polyethylene Sheet Pad Complete Packing Case (IN) for WV-CK1420/B Packing Case (IN) for WV-CK1420/G
			M56 M57	TPC4C1A23801 TPC4C1A23802 TQF4C1A061	Packing Case (OUT) for WV-CK1420/B Packing Case (OUT) for WV-CK1420/G Bar Code Label

REF. NO.	PART NO.	DESCRIPTION	REF. NO.	PART NO.	DESCRIPTION
COLOUR MONITOR WV-CK2020			MAIN BOARD		
MISCELLANEOUS			PCB1(RTL)	CK2020-B-CMA	Printed Circuit Board Assy for WV-CK2020/B
				CK2020-G-CMA	Printed Circuit Board Assy for WV-CK2020/G
CRT1	△ A51AEZ90X15K	21" Cathode Ray Tube	IC401	LA7840	IC
DC1	△ TLK4C9012A	Degaussing Coil	IC601	M52770ASp	IC
L1	CK2020-DY	Deflection Coil	IC801	SE090NLF4	IC
L2	CK2020-CY	Purity Magnet Assy	IC850	AN78M05	IC
SP1	EAS12D310A6	Speaker	IC851	AN78M09	IC
SP2	CK20201AWPB	SP Wire Assy	IC852	AN78M05	IC
E101	△ TSX4C1A013B	AC Power Cord Assy for WV-CK2020/B	IC1101	MN1871681TG	IC
	TSX4C1A013G	AC Power Cord Assy for WV-CK2020/G	IC1102	S24C02ADP	IC
E102	FBTFS3740-2	Wire Assy	IC1103	S-80741AL-Z	IC
M1	TKP4C1A111	Door Cover	IC1105	BA225	IC
M2	TKP4C1A112	Index Plate	IC2301	YWAN5265	IC
M3	TEK4C1A004	Door Catcher	Q160,161	2SB709A-R	Transistor
M4	TKK4C1A033A	Smoke Cover	Q390	2SA564A-R	Transistor
M5	TBM4C1A02801	Panaosnic Badge	Q401	2SD601A-QR	Transistor
M6	TKK4C1A037-B	LED Spacer	Q404	2SD601A-QR	Transistor
M7	TKY4C1A015D1	Cabinet Assy	Q549	2SD1275A-P	Transistor
M8	TMM4C1A052	CRT Spacer	Q551	2SD2499LBMA	Transistor
M9	THT4C1A535	Mount screw for CRT	Q580,581	2SB709A-RS	Transistor
M10	△ TMM15404-1	H.V Wire Clamper	Q801	2SC5241	Transistor
M11	TMM6024-1	DY GUM	Q802,803	2SD789ETZ	Transistor
M12	XF5B10K40171	Rope for CRT	Q804	2SC945AQ	Transistor
M13	TES201	Spring	Q850,851	2SC945AQ	Transistor
M14	△ TKU4C1A017A	Rear Cover	Q852	2SD1275A-P	Transistor
M15	CK202020WPA	21" CRT Wire	Q1145	2SD601A-QR	Transistor
M16	TKK4C1A07101	Cord Clamp	Q1150	2SD601A-QR	Transistor
M17	△ TQF4C1A06804	Main Label for WV-CK2020/B	Q1155	2SD601A-QR	Transistor
	TQF4C1A06805	Main Label for WV-CK2020/G	D391-394	MA165	Diode
M18	△ TQF4C1A07404	CRT Caution Label for WV-CK2020/B	D401	ERA15-01V5	Diode
	TQF4C1A07405	CRT Caution Label for WV-CK2020/G	D402	MA4360-M	Diode
M19	△ TMZ4C1A01101	CH Rail (L)	D403	MA4047-H	Diode
M20	△ TMZ4C1A01001	CH Rail (R)	D404,405	MA165	Diode
M21	TBX4C1A062	Power Button	D501-503	AU02V0	Diode
M27	TMX4C1A009	PCB Support	D504	MA4330-M	Diode
M28	TMM4C1A042	DY Clamper	D510	AU02V0	Diode
M29	TMM6428-1	Cable Clamper	D512	MA4056-L	Diode
M32	△ TQF4C1A075	X-Ray Label for WV-CK2020/G	D517	MA4110-H	Diode
M35	TMM5402-1	Wire Clamper A	D551	ERB06-15V1	Diode
M36	TMM81416	Wire Clamper B	D552	TVSRU2AMV1	Diode
			D580	YWD1NL20U	Diode
			D581	MA4360-L	Diode
			D590	MA4108J	Diode
			D591	MA171	Diode
			D801	△ DGC3R05M	Posistor
			D802	△ D4SB80	Diode
			D803	MA4120-M	Diode
			D804	YWD1NL20U	Diode

REF. NO.	PART NO.	DESCRIPTION	REF. NO.	PART NO.	DESCRIPTION
D805	MA4150M	Diode	R502	ERQ12ZJ1R0	Fuse Resistor 1 ohm 1/2W
D806	MA4051-H	Diode	R503	ERO25TKF1783	Metal 178K ohms 1/4W
D815,816	YWD1NL20U	Diode	R504	ERJ6GEYJ223	Carbon 22K ohms 1/10W
D817	YWS2L60V61	Diode	R510	ERJ6GEYJ563	Carbon 56K ohms 1/10W
D820	TVSSR2KSV1	Diode	R511	ERJ6GEYJ104	Carbon 100K ohms 1/10W
D821	0N3131	Photocoupler	R513	ERJ6GEYJ152	Carbon 15K ohms 1/10W
D840	△ YWPC123FY2	Photocoupler	R514	ERQ2CJP1R2S	Fuse Resistor 1.2 ohms 2W
D850	YWD1NL20U	Diode	R515	ERJ6GEYJ393	Carbon 39K ohms 1/10W
D851	MA4024-H	Diode	R516	ERJ6GEYJ222	Carbon 2.2K ohms 1/10W
D852	EU02V0	Diode	R520	ERJ6GEYJ562	Carbon 5.6K ohms 1/10W
D853	MA4082M	Diode	R521	ERJ6GEYJ915V	Carbon 9.1M ohms 1/10W
D854	MA27T-A	Diode	R523	ERJ6GEYJ273	Carbon 27K ohms 1/10W
D870	YWD1NL20U	Diode	R524	ERJ6GEYJ684	Carbon 680K ohms 1/10W
D871	MA4056-H	Diode	R525	ERJ6GEYJ224	Carbon 220K ohms 1/10W
D1120	MA165	Diode	R526	ERJ6GEYJ471	Carbon 470 ohms 1/10W
D1145	MA165)	Diode	R530	ERJ6GEYJ101	Carbon 100 ohms 1/10W
D1160	MA4056-L	Diode	R547	ERG2ANJ360	Metal 36 ohms 2W
D1170,1171	MA4068M	Diode	R548	ERJ6GEYJ821	Carbon 820 ohms 1/10W
D1180	MA4150M	Diode	R549	ERJ6GEYJ122	Carbon 1.2K ohms 1/10W
D1181	MA4180-M	Diode	R550	ERG2ANJ331	Metal 330 ohms 2W
R160	ERJ6GEYJ221	Carbon 220 ohms 1/10W	R551	ERQ12AJ101P	Fuse Resistor 100 ohms 1/2W
R161	ERJ6GEYJ334	Carbon 330K ohms 1/10W	R552	ERQ1CJP102S	Fuse Resistor 1K ohms 1W
R162	ERJ6GEYJ330	Carbon 33 ohms 1/10W	R580	ERD25TJ823	Carbon 82K ohms 1/4W
R163	ERJ6GEYJ332	Carbon 3.3K ohms 1/10W	R581	ERJ6GEYJ103	Carbon 10K ohms 1/10W
R164	ERDS2TJ271T	Carbon 270 ohms 1/10W	R582	ERD2FAVJ1R5	Carbon 1.5 ohms 2W
R166	ERJ6GEYJ391	Carbon 390 ohms 1/10W	R584	ERJ6GEYJ103	Carbon 10K ohms 1/10W
R167	ERJ6GEYJ181	Carbon 180 ohms 1/10W	R585	ERJ6GEYJ334	Carbon 330K ohms 1/10W
R168	ERJ6GEYJR00	Carbon 0 ohm 1/10W	R586	ERJ6GEYJ683	Carbon 68K ohms 1/10W
R170	ERJ6GEYJ471	Carbon 470 ohms 1/10W	R587	ERJ6GEYJ104	Carbon 100K ohms 1/10W
R201	ERJ6GEYJ471	Carbon 470 ohms 1/10W	R588	ERJ6GEYJ103	Carbon 10K ohms 1/10W
R202	ERJ6GEYJ102	Carbon 1K ohms 1/10W	R589	ERJ6GEYJ223	Carbon 22K ohms 1/10W
R203	ERJ6GEYJ391	Carbon 390 ohms 1/10W	R590	ERJ6ENF1962V	Carbon 19.6K ohms 1/10W
R211	ERJ6GEYJ823	Carbon 82K ohms 1/10W	R591	ERJ6ENF1472	Carbon 14.7K ohms 1/10W
R212	ERJ6GEYJ103	Carbon 10K ohms 1/10W	R592	ERJ6GEYJ100	Carbon 10 ohms 1/10W
R390	ERDS2TJ102T	Carbon 1K ohms 1/10W	R605,606	ERD25TJ100	Carbon 10 ohms 1/4W
R402	ERJ6GEYJ182	Carbon 1.8K ohms 1/10W	R620	ERJ6GEYJ221	Carbon 220 ohms 1/10W
R404	ERJ6GEYJ242	Carbon 2.4K ohms 1/10W	R621	ERDS2TJ471T	Carbon 470 ohms 1/4W
R405	ERJ6GEYJ331	Carbon 330 ohms 1/10W	R623	ERJ6GEYJ471	Carbon 470 ohms 1/10W
R406	ERDS1TJ1R5	Carbon 1.5 ohms 1W	R625	ERJ6GEYJ155V	Carbon 1.5M ohms 1/10W
R407	ERJ6GEYJ121V	Carbon 120 ohms 1/10W	R627	ERJ6GEYJ472	Carbon 4.7K ohms 1/10W
R410	ERJ6GEYJ103	Carbon 10K ohms 1/10W	R628	ERJ6GEYJ915V	Carbon 9.1M ohms 1/10W
R411	ERJ6GEYJ562	Carbon 56K ohms 1/10W	R640-642	ERJ6GEYJ152	Carbon 1.5K ohms 1/10W
R412	ERJ6GEYJ472	Carbon 4.7K ohms 1/10W	R643-645	ERJ6GEYJ331	Carbon 330 ohms 1/10W
R413	ERDS2TJ222T	Carbon 2.2K ohms 1/4W	R650-652	ERJ6GEYJ911	Carbon 910 ohms 1/10W
R414	ERJ6GEYJ333	Carbon 33K ohms 1/10W	R653	ERJ6GEYJ562	Carbon 5.6K ohms 1/10W
R420	ERJ6GEYJ154	Carbon 150K ohms 1/10W	R654	ERD25TJ272	Carbon 2.7K ohms 1/4W
R421	ERJ6GEYJ271	Carbon 270 ohms 1/10W	R801	TRF7ZK2R2T-1	Cement 2.2 ohms
R425	ERDS2TJ223T	Carbon 22K ohms 1/4W	R802	ERG2ANJ150	Metal 15 ohms 2W
R430	ERJ6GEYJ221	Carbon 220 ohms 1/10W	R803,804	ERDS1TJ154	Carbon 150K ohms 1/2W
R431	ERJ6GEYJ274	Carbon 270K ohms 1/10W	R805	ERDS2TJ393	Carbon 39K ohms 1/4W
R451	ERDS1FJ4R7	Carbon 4.7 ohms 1W	R806	△ ERG3ANJ391	Metal 390 ohms 3W
R453	ERJ6GEYJ102	Carbon 1K ohms 1/10W	R807	ERC12ZGK335C	Solid 3.3M ohms 1/2W
R454	ERDS2TJ102T	Carbon 1K ohms 1/4W	R810	ERDS2TJ103	Carbon 10K ohms 1/4W
R455	ERJ6GEYJ221	Carbon 220 ohms 1/10W	R811	ERDS1TJ202	Carbon 2K ohms 1/2W
R501	ERQ12HJ1R0	Fuse Resistor 1 ohm 1/2W	R812	ERDS2TJ751	Carbon 750 ohms 1/4W

REF. NO.	PART NO.	DESCRIPTION	REF. NO.	PART NO.	DESCRIPTION
R815	ERG2ANJ470	Metal 47 ohms 2W	R2320	ERJ6GEYJ102	Carbon 1K ohms 1/10W
R816	ERG2ANJ102	Metal 1K ohms 2W	R2321	ERJ6GEYJ823	Carbon 82K ohms 1/10W
R817	ERDS1TJ222	Carbon 2.2K ohms 1/2W	R2322	ERJ6GEYJ183	Carbon 18K ohms 1/10W
R820	TRF7ZK272T-1	Cement 2.7K ohms	R3007	ERJ6GEYJ750	Carbon 75 ohms 1/10W
R821	ERG3SJ822P	Metal 8.2K ohms 3W	R3211	ERJ6GEYJ561	Carbon 560 ohms 1/10W
R822	ERG1ANJ332	Metal 3.3K ohms 1W	JS2303	ERJ6GEYJ473	Carbon 47K ohms 1/10W
R841	△ ERC12ZGK825C	Solid 8.2M ohms 1/2W	JA6	ERJ6GEYJR00V	Carbon 0 ohm 1/10W
R850	ERDS1TJ152	Carbon 1.5K ohms 1/2W	JA15-17	ERJ6GEYJR00V	Carbon 0 ohm 1/10W
R851	ERDS2TJ241	Carbon 240 ohms 1/4W	JA20,21	ERJ6GEYJR00V	Carbon 0 ohm 1/10W
R852	ERG2ANJ222	Metal 2.2K ohms 2W	JA30,31	ERJ6GEYJR00V	Carbon 0 ohm 1/10W
R853	ERG2ANJ221	Metal 220 ohms 2W	C155	ECEA1CTK470B	Electrolytic 4.7 µF 16V
R854	ERG2SJ222	Metal 2.2K ohms 2W	C156	ECUV1H103ZFN	Ceramic 0.01 µF
R855,856	ERDS2TJ102	Carbon 1K ohms 1/4W	C160	ECEA1HTK100B	Electrolytic 10 µF 50V
R857	ERDS2TJ202	Carbon 2K ohms 1/4W	C161	ECQV1H104JZ3	Plastic 0.1 µF
R860	ERQ16NK1R0E	Fuse Resistor 1 ohm 1/16W	C165	ECUV1H101JCN	Ceramic 100 pF
R861	ERG2ANJ3R3W	Metal 3.3 ohms 2W	C168	ECEA1HTKR33B	Electrolytic 0.33 µF 50V
R862	ERG2ANJ6R2W	Metal 6.2 ohms 2W	C169	ECUV1H221JCN	Ceramic 220 pF
R863	ERG2ANJ3R3W	Metal 3.3 ohms 2W	C201	ECUV1C683KBN	Ceramic 0.068 µF
R1053	ERJ6GEYJ681	Carbon 680 ohms 1/10W	C202	ECEA1HTK3R3B	Electrolytic 3.3 µF 50V
R1101	ERJ6ENF1002V	Carbon 10K ohms 1/10W	C203	ECEA1CTK100B	Electrolytic 10 µF 16V
R1109	ERD25TJ101	Carbon 100 ohms 1/4W	C204	ECUV1H222KBN	Ceramic 2200 pF
R1110	ERJ6GEYJ223	Carbon 22K ohms 1/10W	C211	ECA1HEN010	Electrolytic 1 µF 50V
R1115	ERJ6ENF1002V	Carbon 10K ohms 1/10W	C357	ECQE2223JZA1	Plastic 0.022 µF
R1116,1117	ERJ6ENF2201V	Carbon 2.2K ohms 1/10W	C390	ECEA1CTK331B	Electrolytic 330 µF 16V
R1118	ERJ6ENF3301	Carbon 3.3K ohms 1/10W	C401	ECEA1VTK102E	Electrolytic 1000 µF 35V
R1120	ERJ6ENF1002V	Carbon 10K ohms 1/10W	C402	ECEA1VTK330B	Electrolytic 33 µF 35V
R1121,1122	ERJ6GEYJ103	Carbon 10K ohms 1/10W	C403	ECEA1VTK222E	Electrolytic 2200 µF 35V
R1127	ERJ6GEYJ563	Carbon 56K ohms 1/10W	C405,406	ECUV1H102KBN	Ceramic 1000 pF
R1143	ERD25TJ101	Carbon 100 ohms 1/4W	C410	ECEA1HTKR22B	Electrolytic 0.22 µF 50V
R1145	ERJ6GEYJ222	Carbon 2.2K ohms 1/10W	C420	ECUV1E104KBN	Ceramic 0.1 µF
R1146	ERJ6GEYJ103	Carbon 10K ohms 1/10W	C425	ECSF1EE105VB	Tantalum 10 µF 25V
R1150	ERJ6GEYJ182	Carbon 1.8K ohms 1/10W	C430	ECUV1H103KBN	Ceramic 0.01 µF
R1151-1153	ERJ6GEYJ562	Carbon 5.6K ohms 1/10W	C431	ECEA1HTK010B	Electrolytic 1µF 50V
R1156	ERD25TJ102	Carbon 1K ohms 1/4W	C451	ECQE1224KF3	Plastic 0.22 µF
R1157,1158	ERJ6GEYJ101	Carbon 100 ohms 1/10W	C452	ECA1VHG101B	Electrolytic 100 µF 35V
R1160	ERJ6GEYJ683	Carbon 68K ohms 1/10W	C453	ECQB1682KF3	Plastic 6800 pF
R1161	ERJ6GEYJ223	Carbon 22K ohms 1/10W	C501	ECEA1HTK0R1B	Electrolytic 0.1 µF 50V
R1162	ERJ6ENF1243V	Carbon 124K ohms 1/10W	C503,504	ECKR2H471KB5	Ceramic 470 pF
R1163	ERJ6GEYJ122	Carbon 1.2K ohms 1/10W	C505	ECKR2H561KB5	Ceramic 560 pF
R1164	ERJ6GEYJ682	Carbon 6.8K ohms 1/10W	C506	ECA2EHG220E	Electrolytic 22 µF 250V
R1170,1171	ERJ6GEYJ560	Carbon 56 ohms 1/10W	C507	ECEA1ETK471E	Electrolytic 470 µF 25V
R1172	ERJ6GEYJ332	Carbon 3.3K ohms 1/10W	C508	ECEA1VTK332E	Electrolytic 3300 µF 35V
R1173	ERJ6GEYJ332	Carbon 3.3K ohms 1/10W	C510	ECEA1ATK470B	Electrolytic 47 µF 10V
R1174	ERDS2TJ470T	Carbon 47 ohms 1/4W	C519	ECUV1H330JCN	Ceramic 33 pF
R1193	ERJ6GEYJR00V	Carbon 0 ohm 1/10W	C520	ECEA1HTK010B	Electrolytic 1µF 50V
R1194	ERJ6GEYJ102	Carbon 1K ohms 1/10W	C521	ECUV1H332KBN	Ceramic 3300 pF
R1195	ERJ6GEYJ103	Carbon 10K ohms 1/10W	C522	ECQM1H822JV3	Plastic 8200 pF
R1196	ERJ6GEYJ104	Carbon 100K ohms 1/10W	C525	ECEA1HTK3R3B	Electrolytic 3.3 µF 50V
R1197,1198	ERJ6GEYJ103	Carbon 10K ohms 1/10W	C526	ECUV1H103ZFN	Ceramic 0.01 µF
R1199	ERJ6GEYJ102V	Carbon 1K ohms 1/10W	C530	ECUV1H122KBN	Ceramic 1200 pF
R2310	ERDS2TJ4R7T	Carbon 4.7 ohms 1/4W	C531	ECEA1HTK010B	Electrolytic 1µF 50V
R2311	ERQ2CJP100S	Fuse Resistor 10 ohms	C540	ECUV1H561JUN	Ceramic 560 pF
R2312	ERDS2TJ222T	Carbon 2.2K ohms 1/4W	C546	ECEA1HTK010B	Electrolytic 11 µF 50V
R2313	ERDS2TJ102T	Carbon 1K ohms 1/4W	C548	ECQM1H473JV3	Plastic 0.047 µF 50V
R2314	ERDS2TJ562T	Carbon 5.6K ohms 1/4W	C551	ECKW3D471KBP	Ceramic 470 pF

REF. NO.	PART NO.	DESCRIPTION		REF. NO.	PART NO.	DESCRIPTION	
C552	ECWH12H153JS	Polypropylene	0.015 µF	C853	ECA1HHG471E	Electrolytic	470 µF 50V
C553	ECQM4223JZB	Plastic	0.022 µF	C854	ECA1CHG100B	Electrolytic	10 µF 16V
C555	ECQM4273JZB	Plastic	0.027 µF	C858	ECQM1H473JV3	Plastic	0.047 µF
C559	ECQF2H824JZA	Plastic	0.82 µF 500V	C870	ECEA1VTK101B	Electrolytic	100 µF 35V
C560	ECQF2H474JZA	Metal	0.47 µF	C871	ECEA0JTK101B	Electrolytic	100 µF 6.3V
C558	ECWH12H472JS	Polypropylene	4700 pF	C830	ECEA0JTK101B	Electrolytic	100 µF 6.3V
C580	ECEA1ATK330B	Electrolytic	33 µF 10V	C1101	ECUV1H471JCN	Ceramic	470 pF
C581	ECEA1JTK100B	Electrolytic	10 µF 63V	C1102	ECUV1H103ZFN	Ceramic	0.01 µF
C582	ECEA1HTK010B	Electrolytic	11 µF 50V	C1120	ECEA1HTK010B	Electrolytic	11 µF 50V
C585	ECUV1H104ZFN	Ceramic	0.01 µF	C1135	ECUV1H103ZFN	Ceramic	0.01 µF
C590	ECEA1VTK101B	Electrolytic	100 µF 35V	C1137	ECEA1CTK220B	Electrolytic	22 µF 16V
C591	ECKR2H331KB5	Ceramic	330 pF	C1138	ECUV1H103ZFN	Ceramic	0.01 µF
C601	ECEA1HTKR22B	Electrolytic	0.22 µF 50V	C1145	ECUV1H680JCN	Ceramic	68 pF
C604	ECUV1H680JCN	Ceramic	68 pF	C1146	ECUV1H101JCN	Ceramic	100 pF
C605	ECUV1H103ZFN	Ceramic	0.01 µF	C1149	ECUV1H560JCN	Ceramic	56 pF
C606	ECEA1CTK470B	Electrolytic	4.7 µF 16V	C1151-1153	ECUV1H820JCN	Ceramic	82 pF
C610	EEUFA1A102E	Electrolytic	1000 µF 10V	C1156	ECUV1H102JCN	Ceramic	1000 pF
C611-613	ECUV1E104KBN	Ceramic	0.1 µF	C1157	ECUV1H103ZFN	Ceramic	0.01 µF
C615	ECEA0JTK101B	Electrolytic	100 µF 6.3V	C1160	ECEA1CTK471B	Electrolytic	47 µF 16V
C616	ECUV1H223ZFN	Ceramic	0.022 µF	C1161	ECUV1H103ZFN	Ceramic	0.01 µF
C620,621	ECUV1H223KBN	Ceramic	0.022 µF	C1170,1171	ECUV1H101JCN	Ceramic	100 pF
C622	ECUV1C224KBN	Ceramic	0.22 µF	C1172	ECUV1H103ZFN	Ceramic	0.01 µF
C626	ECUV1H103KBN	Ceramic	0.01 µF	C1173	ECEA1CTK100B	Electrolytic	10 µF 16V
C627	ECEA1HTKR47B	Electrolytic	0.47 µF 50V	C1174	ECUV1H103ZFN	Ceramic	0.01 µF
C628	ECUV1H153KBN	Ceramic	0.015 µF	C1199	ECEA0JTK220B	Electrolytic	22 µF 6.3V
C630	ECUV1H151JCN	Ceramic	150 pF	C2302	ECEA1CTK100B	Electrolytic	10 µF 16V
C633	ECEA1ATK331B	Electrolytic	330 µF 10V	C2305	ECEA1CTK100B	Electrolytic	10 µF 16V
C634	ECUV1H103ZFN	Ceramic	0.01 µF	C2306	ECEA1ETK220B	Electrolytic	22 µF 25V
C640-642	ECUV1H330JCN	Ceramic	33 pF	C2307	ECEA1ETK102E	Electrolytic	1000 µF 25V
C645-647	ECUV1H820JCN	Ceramic	82 pF	C2309	ECEA1ETK102E	Electrolytic	1000 µF 25V
C801	△ ECQU2A224KHB	Metal	0.22 µF	C2311	ECQM1H683JV3	Plastic	0.068 µF 50V
C802	△ ECQU2A104MNB	Plastic	0.1 µF	C2313	ECQM1H332JV3	Plastic	3300 pF 50V
C803	△ ECKCNA221MBB	Ceramic	220 pF	C2314	ECEA1HTK2R2B	Electrolytic	2.2 µF 50V
C805	ECKW2H103PE8	Ceramic	0.01 µF	C3209 (R3209)	ERJ6GEY0R00	Carbon	0 ohm 1/10W
C806-809	ECKW2H472PE8	Ceramic	4700 pF	X520	TAFCSB500F48	Crystal Oscillator	
C810	△ ECOS2DA331CB	Electrolytic	330 µF	X626	TSS4GA002T	Crystal Oscillator	
C814	ECKW3D102KBP	Ceramic	1000 pF	X1160	EFOEC1205B4	Crystal Oscillator	
C815	ECQV1H224JZ3	Metal	0.22 µF	J26	XEA6150	Jumper	
C816	ECQM1H333JV3	Plastic	0.033 µF	J212	TSKA075	Coil	
C817	ECQM1H473JV3	Plastic	0.047 µF	J248	XEA6160	Jumper	
C818	ECA1AHG101B	Electrolytic	100 µF 10V	J264	TSKA075	Coil	
C820	ECQM1H223JV3	Plastic	0.022 µF	J307	TSKA077	Coil	
C821	ECQM1H273JV3	Plastic	0.027 µF	J400,401	XEA6160	Jumper	
C822	ECKW3D821KBP	Ceramic	820 pF	JS502	TSKA075	Coil	
C823	ECOS2CA102CB	Ceramic	1000 pF	L150	ELEP4CJ101KA	Coil	100 µH
C824	ECKW3D821KBP	Ceramic	820 pF	L402	TSKA075	Coil	
C825	ECKW3D102KBP	Ceramic	1000 pF	L501	TSKA075	Coil	
C828	ECA1EHG331B	Electrolytic	330 µF 25V	L551	TSKA075	Coil	
C829	ECA1CHG101B	Electrolytic	100 µF 16V	L552	TSKA075	Coil	
C830	ECEA0JTK101B	Electrolytic	100 µF 6.3V	L553	TLH6667P-1	Linearity Coil	
C831	ECA160V33UE	Electrolytic	33 µF 160V	L554	LHL08TB682J	Coil	6800 µH
C840	△ ECKCNA222MEB	Ceramic	2200 pF	L555	TSKA077	Coil	
C850	ECA1EHG102E	Electrolytic	1000 µF 25V	L557	TSKA077	Coil	
C851	ECKR2H471KB5	Ceramic	470 pF	L558	TSKA075	Coil	
C852	ECKW3D471KBP	Ceramic	470 pF	L580	TSKA077	Coil	

REF. NO.	PART NO.	DESCRIPTION	REF. NO.	PART NO.	DESCRIPTION
L611	TSKA075	Coil	CRT SOCKET BOARD		
L612	ELEP4CJR47KA	Coil 0.47 μ H			
L620	TSKA077	Coil	PCB2 (RTL)	CK2020-G-CMC	Printed Circuit Board Assy
L640-642	TL0ABTA100K	Peaking Coil	Q351,352	2SC2258	Transistor
L801 \triangle	ELF18D666P	Line Filter	Q354	2SC2258	Transistor
L810	TSKA075	Coil	R351,352	ERG2ANJ123	Metal 12K ohms 2W
L850	TSKA075	Coil	R366-368	ERDS2TJ331	Carbon 330 ohms 2W
L870	TSKA075	Coil	R369-371	ERDS2TJ332	Carbon 3.3K ohms 2W
L1104	TL0ABTA100K	Peaking Coil 10 μ H	R372-374	ERDS2TJ101	Carbon 100 ohms 2W
L1135	TL0ABTA100K	Peaking Coil 10 μ H	R375	ERDS1TJ272T	Carbon 2.7K ohms 1/2W
L1140	TL0ABTA100K	Peaking Coil 10 μ H	R376	ERG2ANJ123	Metal 12K ohms 2W
L1151	TL0ABTA100K	Peaking Coil 10 μ H	R386,387	ERDS1TJ272T	Carbon 2.7K ohms 1/2W
L1152	TSKA069	Coil	C350	ECKF1H331KB	Ceramic 330 pF
T501 \triangle	ETF-46L333AY	Flyback Transformer	C351	ECKF1H561KB	Ceramic 560 pF
T550 \triangle	TLH15462M	Transformer	C352	ECKF1H471KB	Ceramic 470 pF
T801 \triangle	ETS29AK286NC	Transformer	C353	ECKF1H561KB	Ceramic 560 pF
F801,802 \triangle	XBA2C31TR0	Fuse 3.15A 250V	C354	ECKW3D821KBN	Ceramic 820 pF
F1-4 \triangle	TP00351-51	Fuse Holder	C356	ECKD2H103PE	Ceramic 0.01 μ F
S801 \triangle	ESB92DA1B	Power Switch	C357	ECQM2223JZ	Plastic 0.022 μ F 200V
S1101	EVO4CTSVM-2T	TACT Switch	CN1(JK14) \triangle	TJSC4C9101	CRT Socket
S1103	EVO4CTSVM-2T	TACT Switch	CN11	CK2020A11S5	Wire Assy for Main Board CN11
S1104-1106	EVO4CTSVM-2T	TACT Switch	CN12	CK2020A12S4	Wire Assy for Main Board CN12
TP	TJS4CP05-L	5P Connector Socket	LED BOARD		
CN11 (A11)	TJS4C63574TA	5P Connector Socket			
CN12 (A12)	TJS4C63573TA	4P Connector Socket	PCB3 (RTL)	CK2020-G-CML	Printed Circuit Board Assy
CN14 (A21)	TJS5A8730	3P Board Connector	D1051	SLR-56VC3FN	LED
M22	TUC4C1A068	Heat Sink for Q551	CN1 (L1)	TJS5A8750	3-pin Connector
M23	TUC4C1A069	Heat Sink for IC851	M30	TMM4C1A059	LED Spacer
M24	TUC4C1A054A	Heat Sink for IC401	ACCESSORY PARTS / PACKAGING PARTS		
M25	TUC4C1A066	Heat Sink for Q801			
M26 (EM3100)	TJB4C1A030	AV Connector Assy	M51 \triangle	TQB4C1A189	Operating Instructions
			M52	TPE4C1A00201	Polyethylene Bag
			M53	TPE4C1A014	Polyethylene Sheet
			M54	TPD4C1A016A	PAD Complete
			M55	TPC4C1A23401	Packing Case (IN)
			M56	TPC4C1A23901	Packing Case (OUT)
			M57	TQF4C1A061	Bar Code Label